

# Apartment in Sliema



**Sliema, Sliema and St Julians Surroundings**



**€1,500**

Reference No: 240091116-49

 Total Rooms: **6**

 Floor Area (m<sup>2</sup>) : **90**

 Bathrooms: **2**

 Bedrooms: **2**

# Apartment - For Rent - Sliema

SLIEMA A modern APARTMENT situated in Sliema, close to Balluta Bay. Layout is in the form of an open plan kitchen/living/dining area, two double bedrooms, two bathrooms, a boxroom, a small back terrace and a wide front balcony. Apartment enjoys plenty of sunshine. . Highly recommended!

## Features

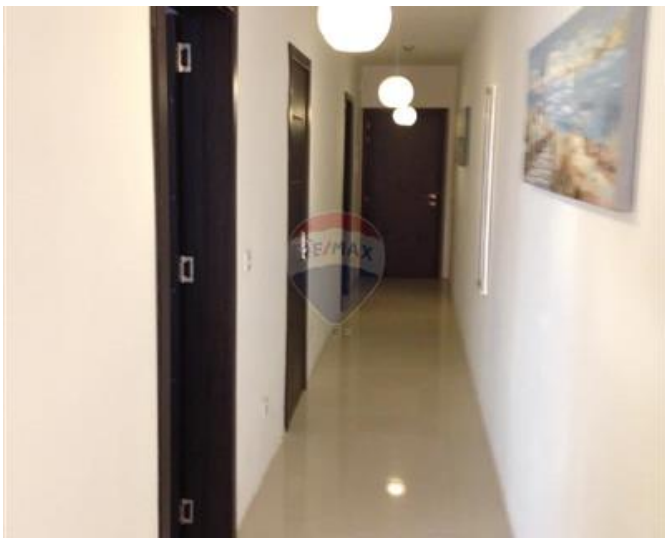
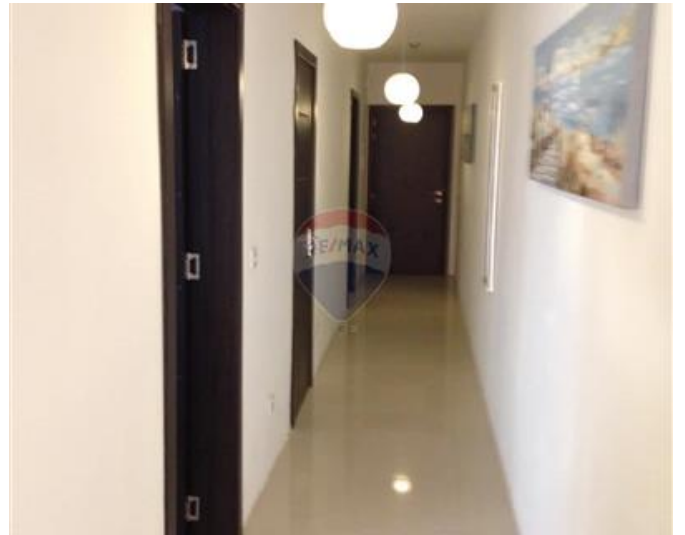
- ✓ Lift
- ✓ Kitchen/Dinette
- ✓ En Suite
- ✓ Terrace
- ✓ Automatic door
- ✓ Ceramic Floor
- ✓ A/C
- ✓ Balcony

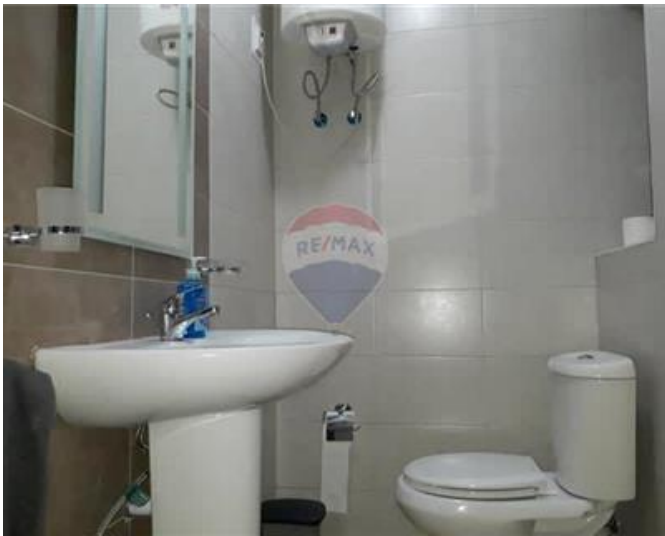
## Rooms

- ✓ Kitchen/Living/Dining : 0 x 0 m (0 m2)
- ✓ Double Bedroom : 0 x 0 m (0 m2)
- ✓ Double Bedroom : 0 x 0 m (0 m2)
- ✓ Bathroom : 0 x 0 m (0 m2)
- ✓ Bathroom : 0 x 0 m (0 m2)
- ✓ Box Room : 0 x 0 m (0 m2)

# Gallery









**Sonia Gatt**

RE/MAX Crown - Sliema

M: 79260039

E: [sonia@remaxcrown.com](mailto:sonia@remaxcrown.com)

T: 21342410

**RE/MAX Crown - Sliema**

166, 169, Tower Road, Sliema, Malta