

Penthouse Duplex in Sliema




Sliema, Sliema and St Julians Surroundings



€3,000

Reference No: 240091116-250

 Total Rooms: **7**

 Floor Area (m²) : **138**

 Bathrooms: **2**

 Bedrooms: **2**

Penthouse Duplex - For Rent - Sliema

Highly finished and furnished, this 138 square meter duplex penthouse in Sliema is located in a highly visible and sought-after neighborhood, close to all facilities and the seafront. A large living area with a front balcony walkout, two double bedrooms with balconies, the main bathroom with a modest back balcony, and a box room are all located on the lower floor. At the top floor, there is a spacious open-concept kitchen, living room, and dining area with a walkout onto a front patio perfect for entertaining. The property has a lift.

Features

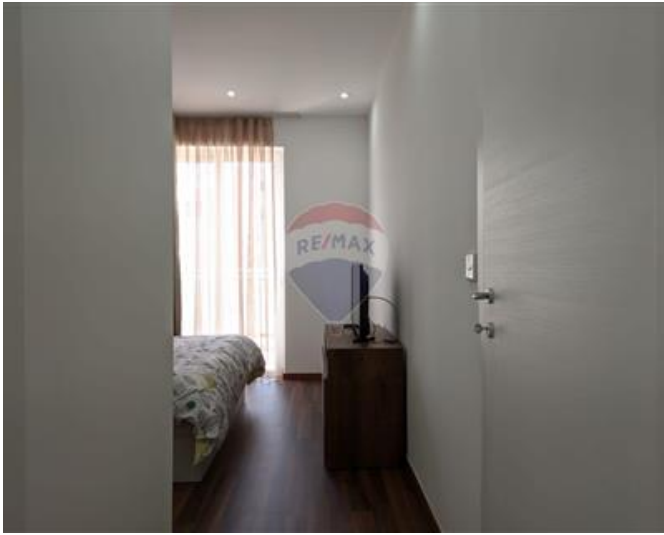
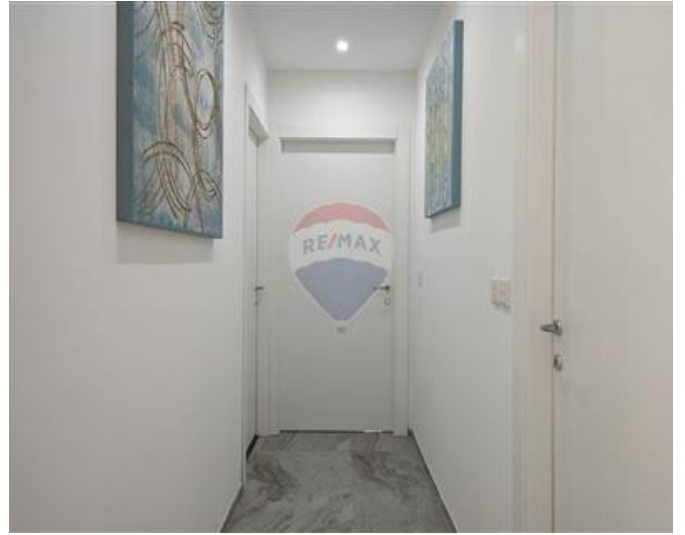
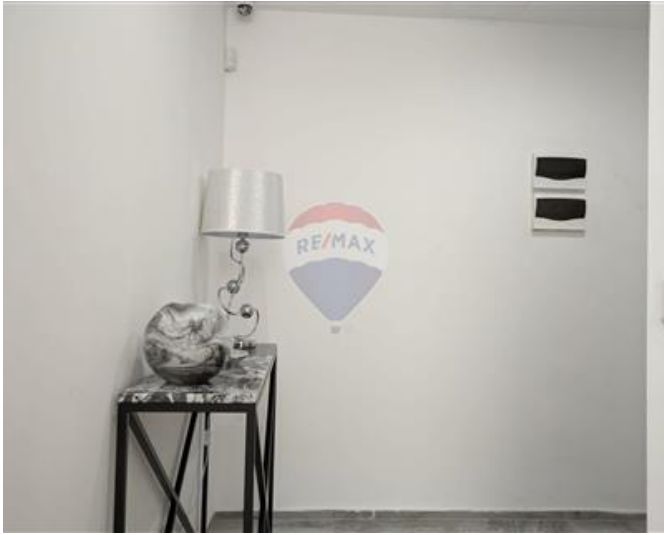
- ✓ Lift
- ✓ Ceramic Floor
- ✓ Marble Floor
- ✓ Double Glazed
- ✓ Balcony
- ✓ Kitchen/Dinette
- ✓ En Suite
- ✓ Soffit Ceilings
- ✓ Terrace

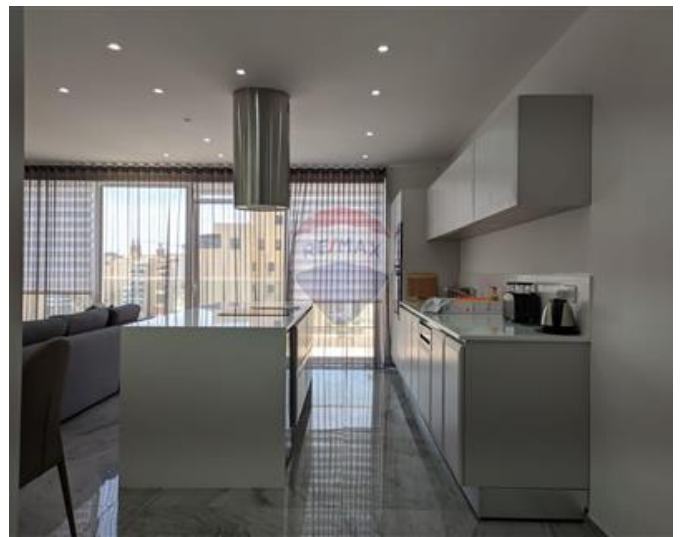
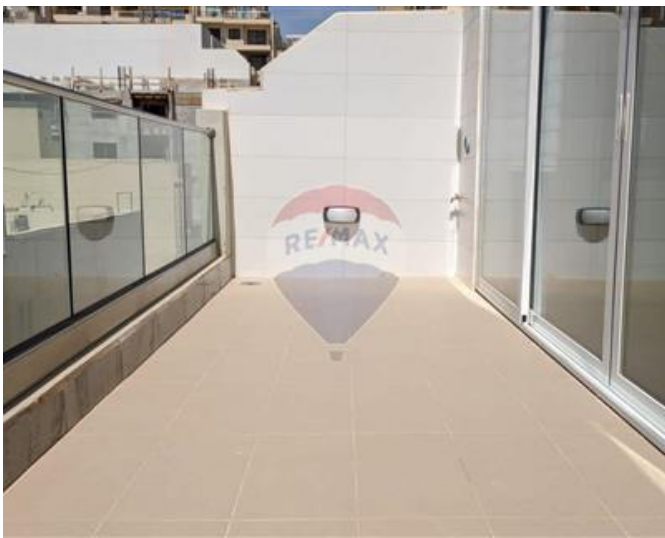
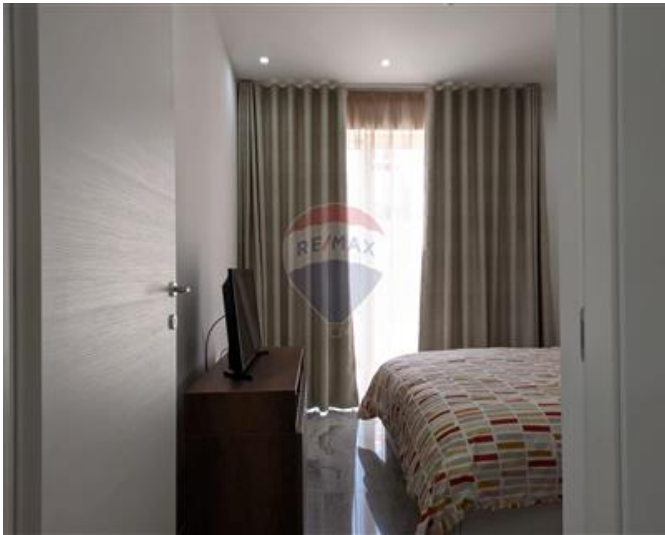
Rooms

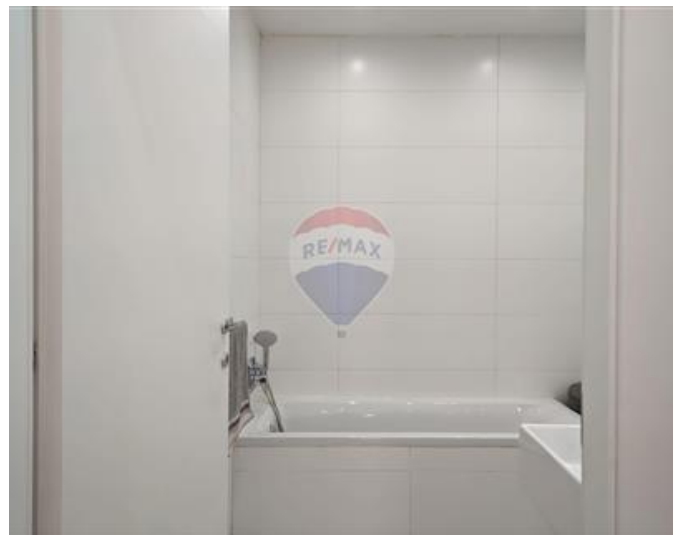
- ✓ Kitchen/Living/Dining : 7.1 x 6.7 m (47.57 m²)
- ✓ Living : 9.9 x 4.5 m (44.55 m²)
- ✓ Double Bedroom : 3.1 x 3 m (9.3 m²)
- ✓ Bathroom : 1.8 x 3 m (5.4 m²)
- ✓ Box Room : 1.8 x 1.1 m (1.98 m²)
- ✓ Guest Toilet : 1.8 x 1.8 m (3.24 m²)
- ✓ Double Bedroom : 3.1 x 3 m (9.3 m²)

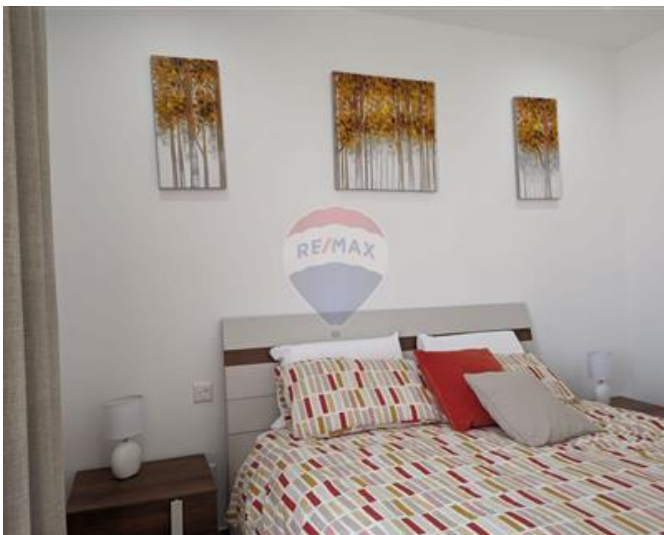
Gallery















Sonia Gatt

RE/MAX Crown - Sliema

M: 79260039

E: sonia@remaxcrown.com

T: 21342410

RE/MAX Crown - Sliema

165, 166, 169, Tower Road, Sliema, Malta