

# Apartment in Sliema



**Sliema, Sliema and St Julians Surroundings**



**€1,500**

Reference No: 240091116-112

 Total Rooms: **6**

 Floor Area (m<sup>2</sup>) : **0**

 Bathrooms: **2**

 Bedrooms: **2**

# Apartment - For Rent - Sliema

SLIEMA - Located just off the seafront is this compact apartment, situated close to shops, restaurants and the beach. Layout is in the form of an open plan kitchen/living area, separate dining room, two bedrooms (main with en-suite), a guest bathroom and a large front balcony. Property is equipped with all amenities including dishwasher, tumble dryer, washing machine and air-condition.

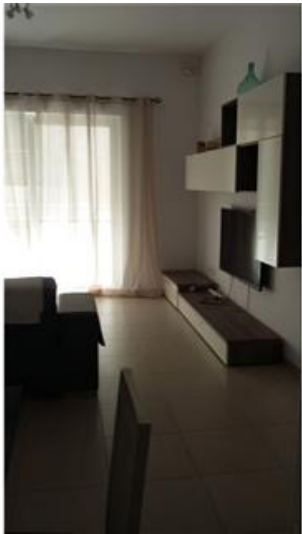
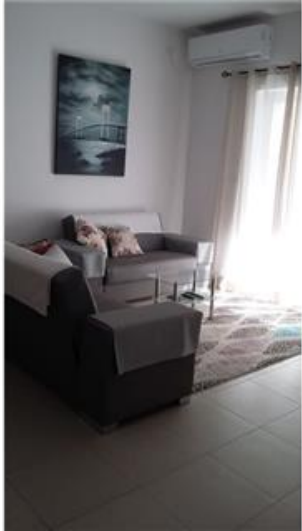
## Features

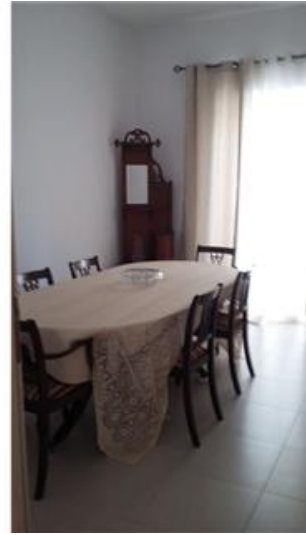
- ✓ Entrance Hall
- ✓ Balcony

## Rooms

- ✓ Double Bedroom : 0 x 0 m (0 m2)
- ✓ Double Bedroom : 0 x 0 m (0 m2)
- ✓ Dining : 0 x 0 m (0 m2)
- ✓ Bathroom Ensuite : 0 x 0 m (0 m2)
- ✓ Kitchen/Living/Dining : 0 x 0 m (0 m2)
- ✓ Bathroom : 0 x 0 m (0 m2)

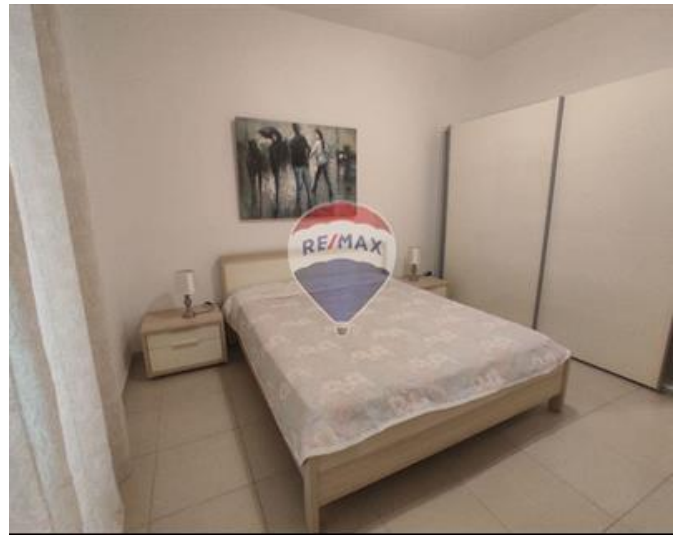
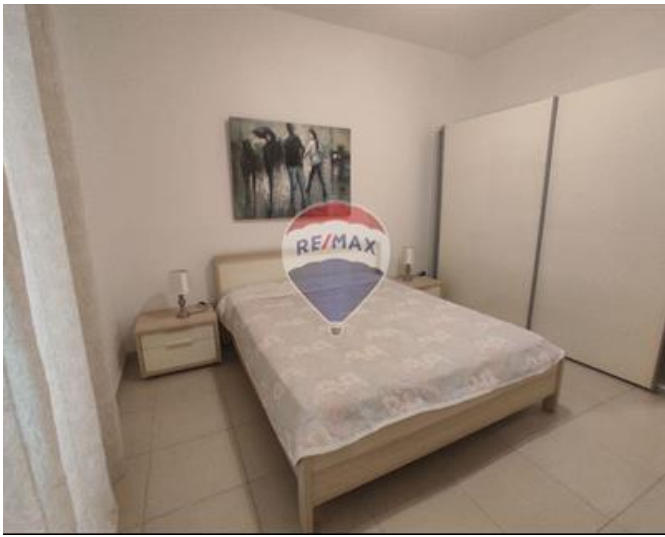
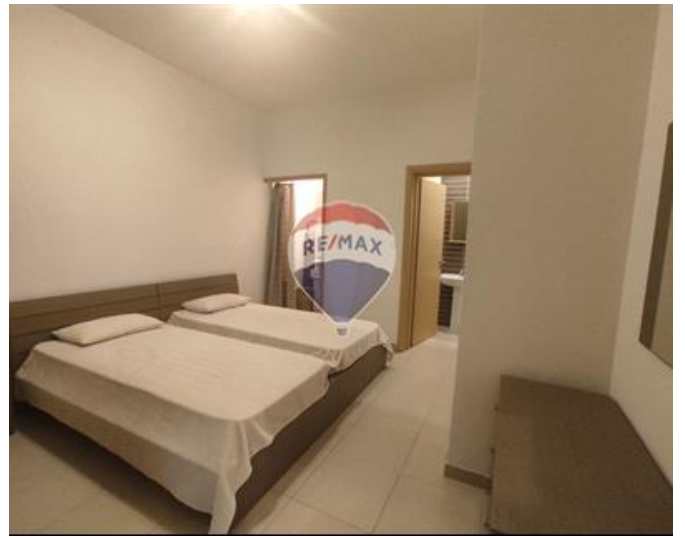
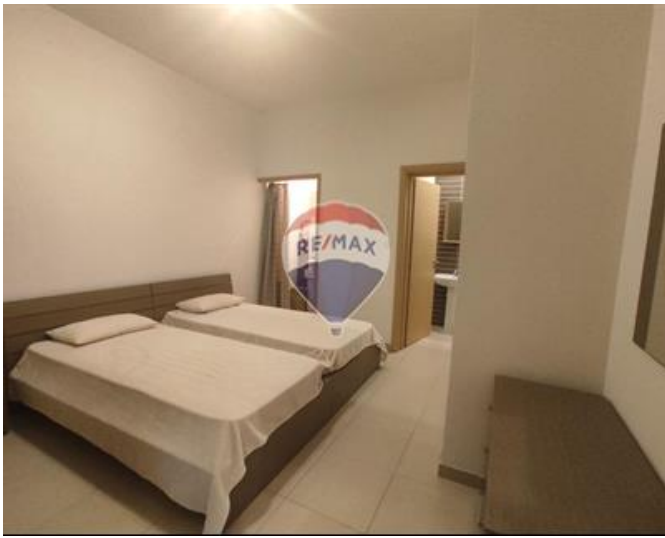
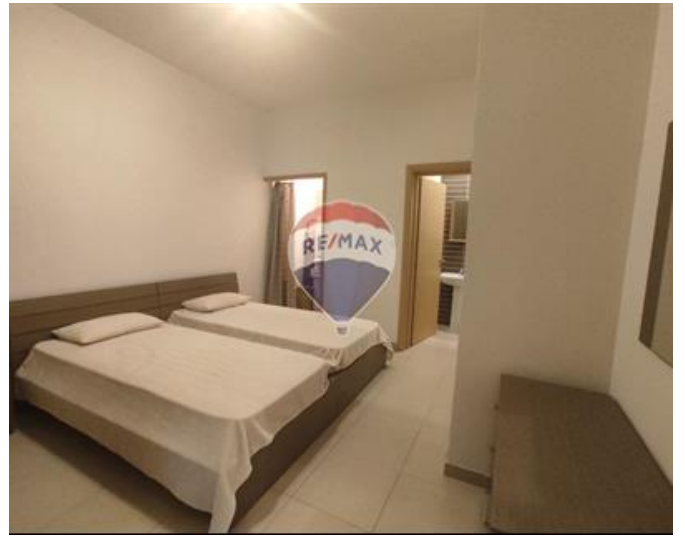
# Gallery

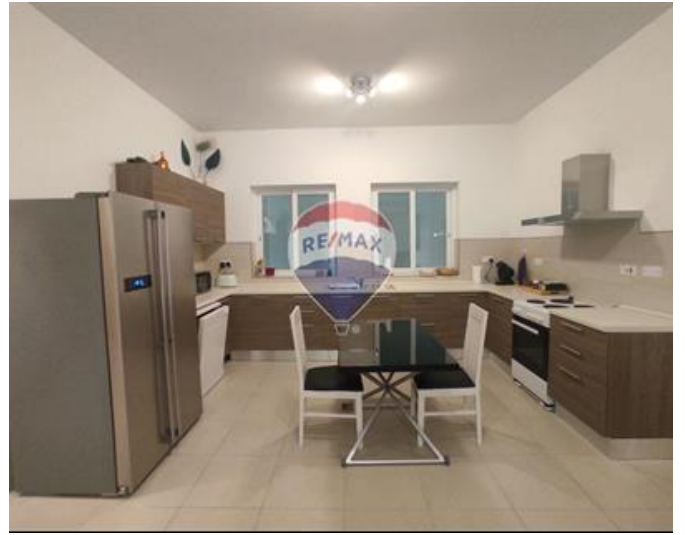
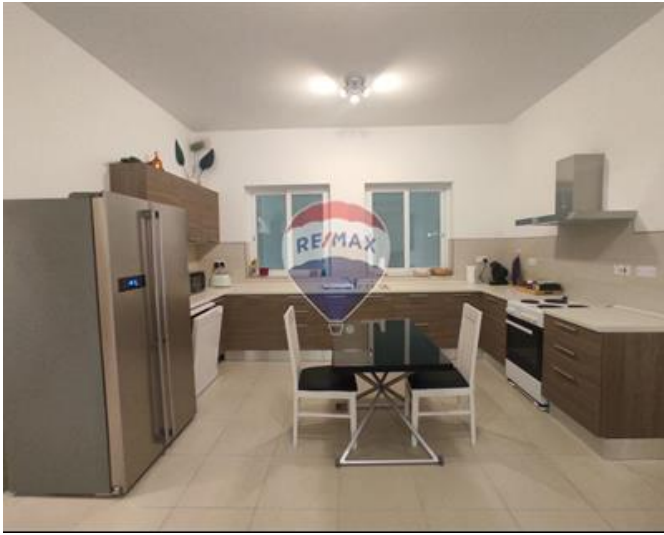


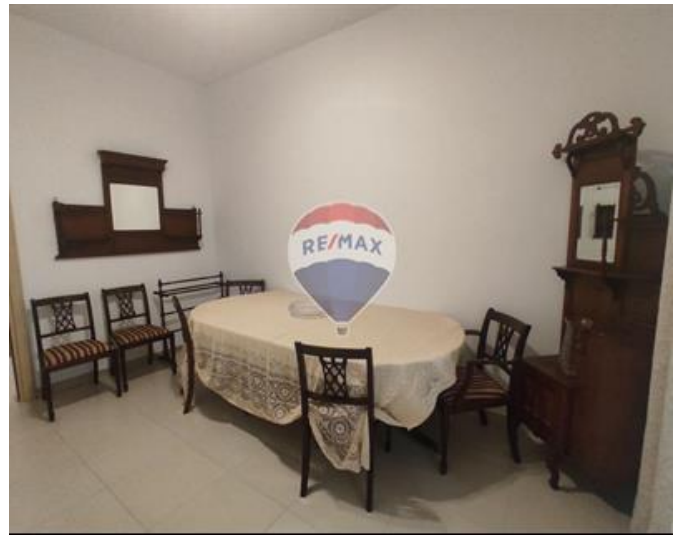
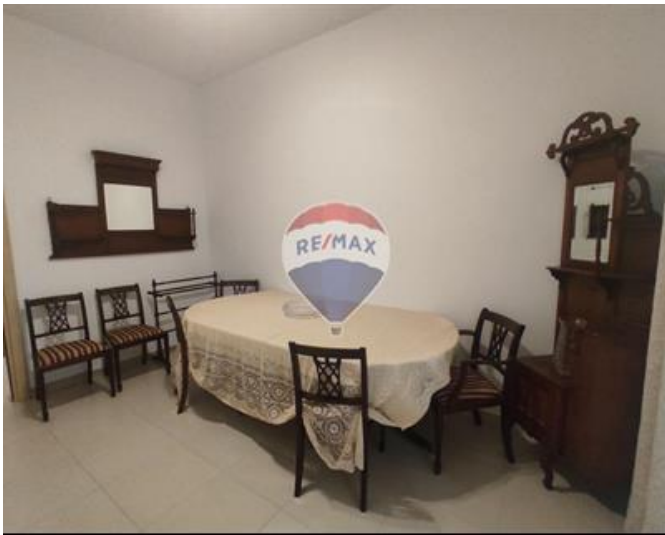
















**Sonia Gatt**

RE/MAX Crown - Sliema

M: 79260039

E: [sonia@remaxcrown.com](mailto:sonia@remaxcrown.com)

T: 21342410

**RE/MAX Crown - Sliema**

166, 169, Tower Road, Sliema, Malta