

Penthouse in Swieqi



Swieqi, Sliema and St Julians Surroundings



€1,495,000

Reference No: 240091088-217

 Total Rooms: **10**

 Floor Area (m²) : **435**

 Bathrooms: **3**

 Bedrooms: **4**

Penthouse - For Sale - Swieqi

Swieqi - Penthouse located in one of the best quiet, residential streets of Swieqi, yet only a five-minute walk to the heart of St. Julians. The property is finished to the highest standards. A spacious outdoor area surrounds the property, making it very bright. 3 bedrooms, the main with en-suite facilities, a guest bathroom and a study. All apertures are double-glazed, and the property includes a two-car garage.

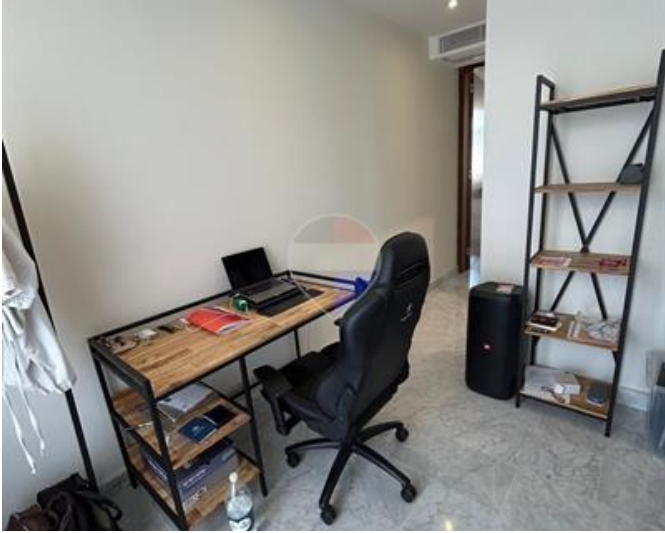
Features

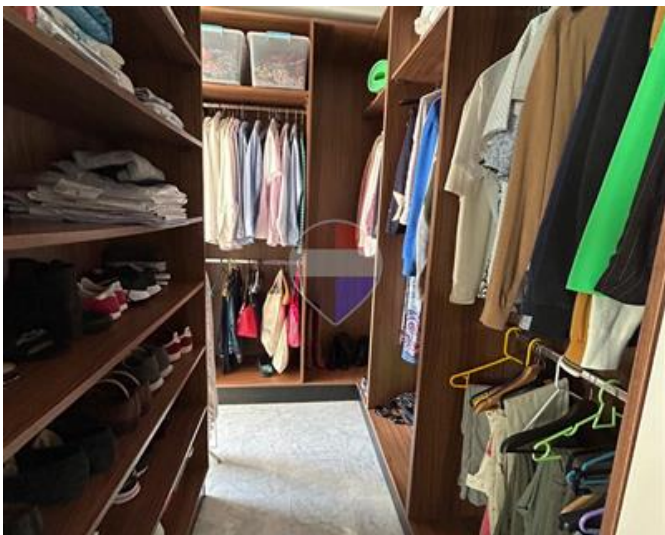
- ✓ Lift
- ✓ En Suite
- ✓ A/C
- ✓ Air Space
- ✓ CCTV
- ✓ Kitchen/Dinette
- ✓ 3 Phase Electricity
- ✓ Double Glazed
- ✓ Balcony

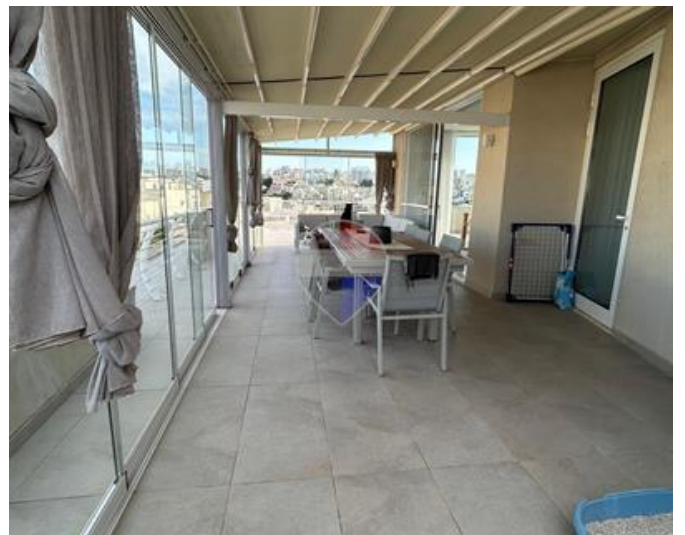
Rooms

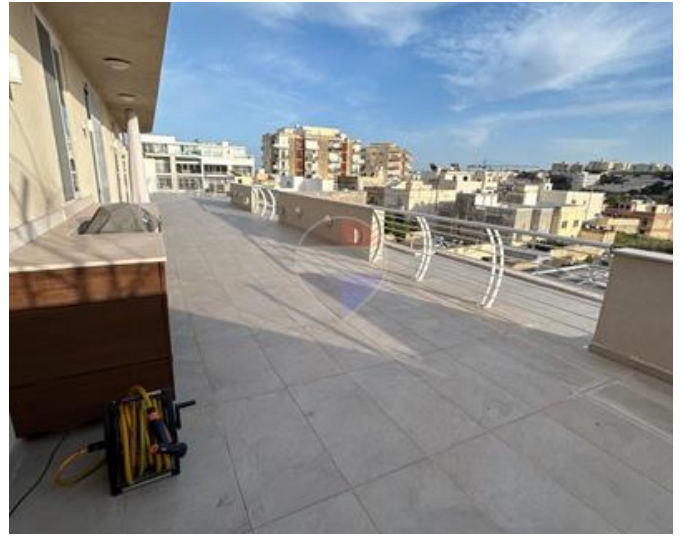
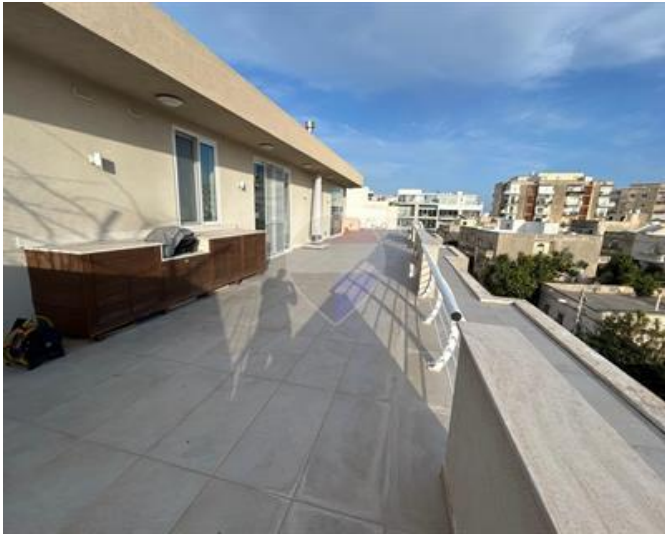
- ✓ Kitchen : 1 x 1 m (1 m2)
- ✓ Dining : 4 x 13 m (52 m2)
- ✓ Living : 1 x 1 m (1 m2)
- ✓ Double Bedroom : 3.8 x 4.6 m (17.48 m2)
- ✓ Double Bedroom : 2.9 x 4.5 m (13.05 m2)
- ✓ Double Bedroom : 5.2 x 6 m (31.2 m2)
- ✓ Double Bedroom : 4 x 3 m (12 m2)
- ✓ Bathroom Ensuite : 3.15 x 3 m (9.45 m2)
- ✓ Guest Toilet : 1 x 1 m (1 m2)
- ✓ Guest Toilet : 1 x 1 m (1 m2)

Gallery













Marylene Cabal

RE/MAX Crown - Sliema

M: 99949274

E: marylene@remaxcrown.com

T: 21342410

RE/MAX Crown - Sliema

166, 169, Tower Road, Sliema, Malta