

# Block Of Apartments in Valletta



**Valletta, Valletta**



**€4,000,000**

Reference No: 240091088-211

 Total Rooms: **14**

 Floor Area (m<sup>2</sup>) : **200**

 Bathrooms: **6**

 Bedrooms: **7**

# Block Of Apartments - For Sale - Valletta

VALLETTA: Situated on a prominent corner in one of Valletta's oldest and most picturesque quarters, this unique property comprises two spacious designer apartments and an exclusive luxury duplex penthouse, offering an outstanding residential or investment opportunity. Ideally located just moments from the iconic Upper Barrakka Gardens, the property benefits from immediate access to the Gozo fast ferry, the Three Cities ferry, and Valletta's vibrant selection of cafés, restaurants, boutiques, and cultural attractions. Each residence beautifully blends traditional Maltese architectural features with contemporary designer finishes. The apartments offer generous open-plan living, dining, kitchen, and breakfast areas that extend onto traditional Maltese balconies. Both units include two large double bedrooms, with the main bedroom featuring a private en-suite. Crowning the property is a beautifully designed duplex penthouse comprising three bedrooms and a spacious rooftop terrace, complete with a Jacuzzi, perfect for relaxing or entertaining while enjoying stunning panoramic views. All units are being sold highly finished and fully designer furnished, ensuring a seamless turnkey experience. With its prime location, rich character, and refined interiors, this exceptional property is ideal as a stylish home in Malta's capital or as a highly attractive rental investment in one of Valletta's most sought-after areas.

## Features

## Rooms

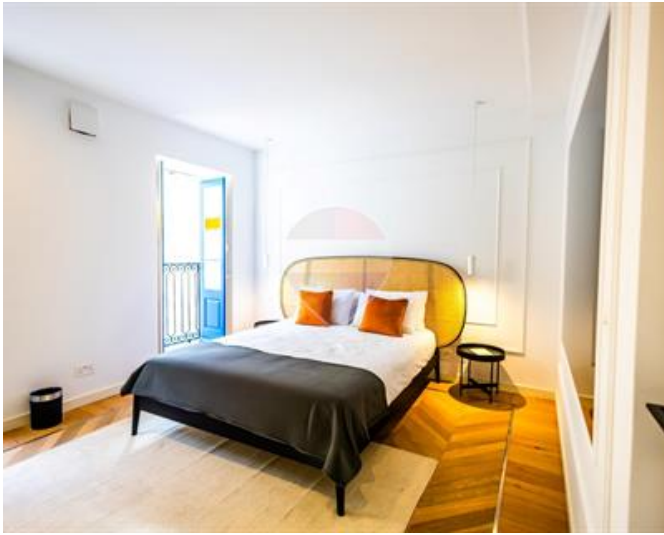
- ✓ Kitchen/Living/Dining : 10 x 5 m (50 m2)
- ✓ Double Bedroom : 4 x 3 m (12 m2)
- ✓ Double Bedroom : 4 x 3 m (12 m2)
- ✓ Double Bedroom : 4 x 3 m (12 m2)
- ✓ Double Bedroom : 4 x 3 m (12 m2)
- ✓ Double Bedroom : 4 x 3 m (12 m2)
- ✓ Double Bedroom : 4 x 3 m (12 m2)
- ✓ Double Bedroom : 4 x 3 m (12 m2)
- ✓ Bathroom : 2 x 2.5 m (5 m2)
- ✓ Bathroom : 2 x 2.5 m (5 m2)

- ✓ Bathroom : 2 x 2.5 m (5 m<sup>2</sup>)
- ✓ Bathroom : 2 x 2.5 m (5 m<sup>2</sup>)
- ✓ Bathroom : 2 x 2.5 m (5 m<sup>2</sup>)
- ✓ Bathroom : 2 x 2.5 m (5 m<sup>2</sup>)

# Gallery













**Marylene Cabal**

RE/MAX Crown - Sliema

M: 99949274

E: [marylene@remaxcrown.com](mailto:marylene@remaxcrown.com)

T: 21342410

**RE/MAX Crown - Sliema**

166, 169, Tower Road, Sliema, Malta