

House of Character in Lija



Lija, Central



€850,000

Reference No: 240091058-278

 Total Rooms: **12**

 Floor Area (m²) : **182**

 Bathrooms: **4**

 Bedrooms: **3**

House of Character - For Sale - Lija

Lija - This charming House of Character located in a UCA area in a quiet alley in the village of Lija features a well-arranged layout that seamlessly combines traditional Maltese architecture with modern comforts. The property includes three bedrooms all with en-suites, providing ample accommodation for a family or guests. The living room offers a comfortable space for relaxation and social gatherings. Adjacent to the living area, the kitchen and dining room create an inviting environment for everyday meals and entertaining, with direct access to a quaint courtyard that enhances the home's charm. Additionally, the house includes a cellar which adds a historical touch and can be utilized as an additional recreational space. A standout feature of the home is the terrace adjacent to the bedrooms, offering a serene spot to enjoy the outdoors and views of the surrounding area. Further elevating the property's appeal is the roof terrace, complete with a kitchenette, lounge, providing a fantastic space for outdoor entertainment and relaxation. This rooftop area is ideal for hosting gatherings. This House of Character in Lija is a blend of tradition and convenience, making it an excellent choice for those seeking a home with both historical significance and modern amenities. Contact your Remax agent for an immediate viewing

Features

- ✓ Kitchen/Dinette
- ✓ Entrance Hall
- ✓ Pattern Tiles
- ✓ Court Yard
- ✓ Well
- ✓ En Suite
- ✓ A/C
- ✓ Terrace
- ✓ Air Space
- ✓ Roof Terrace

Rooms

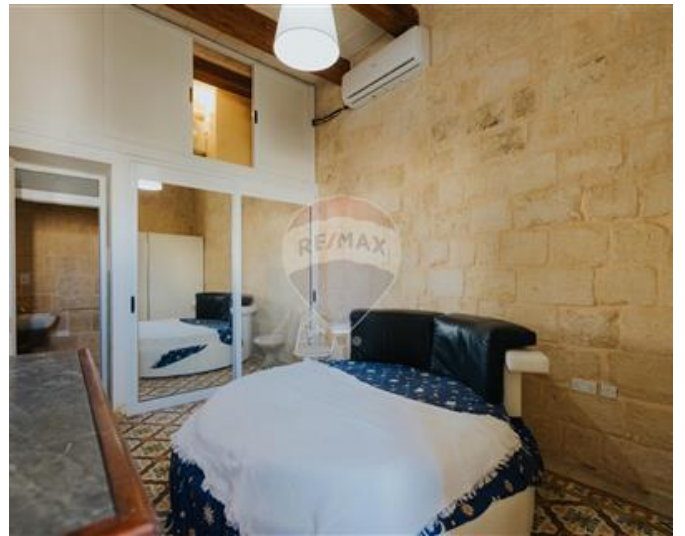
- ✓ Living : 4.5 x 3.45 m (15.53 m²)
- ✓ Dining : 4.2 x 3 m (12.6 m²)
- ✓ Kitchen : 3.3 x 3 m (9.9 m²)
- ✓ Hall : 7.5 x 1.65 m (12 m²)
- ✓ Hall : 6.6 x 1.65 m (10.89 m²)
- ✓ Double Bedroom : 4.8 x 3.6 m (17.28 m²)
- ✓ Double Bedroom : 5.1 x 3 m (15.3 m²)

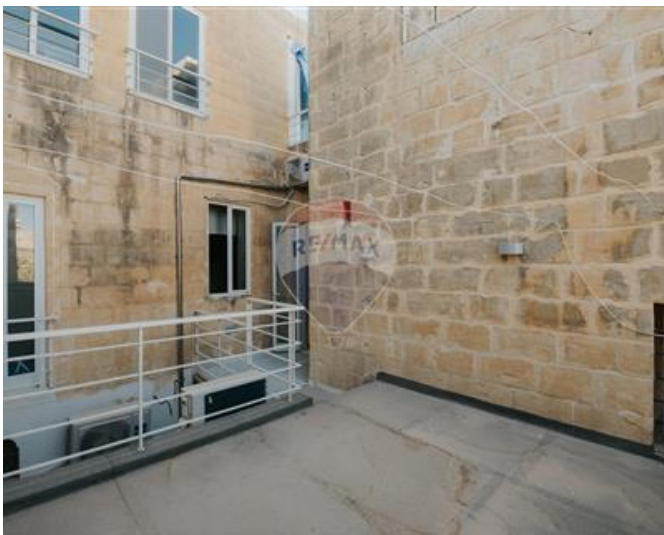
- ✓ Double Bedroom : 3.9 x 3.6 m (14.04 m²)
- ✓ Bathroom Ensuite : 2.4 x 2.1 m (5.04 m²)
- ✓ Bathroom Ensuite : 3.3 x 2.25 m (7.42 m²)
- ✓ Shower : 3.15 x 1.5 m (4.72 m²)
- ✓ Guest Toilet : 1.95 x 1.65 m (3.22 m²)
- ✓ Box Room : 2.19 x 1.95 m (4.27 m²)
- ✓ Laundry : 4.95 x 2.19 m (10.84 m²)
- ✓ Open Space : 2.3 x 1.6 m (3.68 m²)
- ✓ Open Space : 3.9 x 3.45 m (13.46 m²)
- ✓ Open Space : 2.7 x 2.4 m (6.48 m²)
- ✓ Open Space : 3.3 x 3 m (9.9 m²)

Gallery













Ian DeGabriele

RE/MAX Crown - Sliema

M: 99841661

E: ian@remaxcrown.com

T: 21342410

RE/MAX Crown - Sliema

166, 169, Tower Road, Sliema, Malta