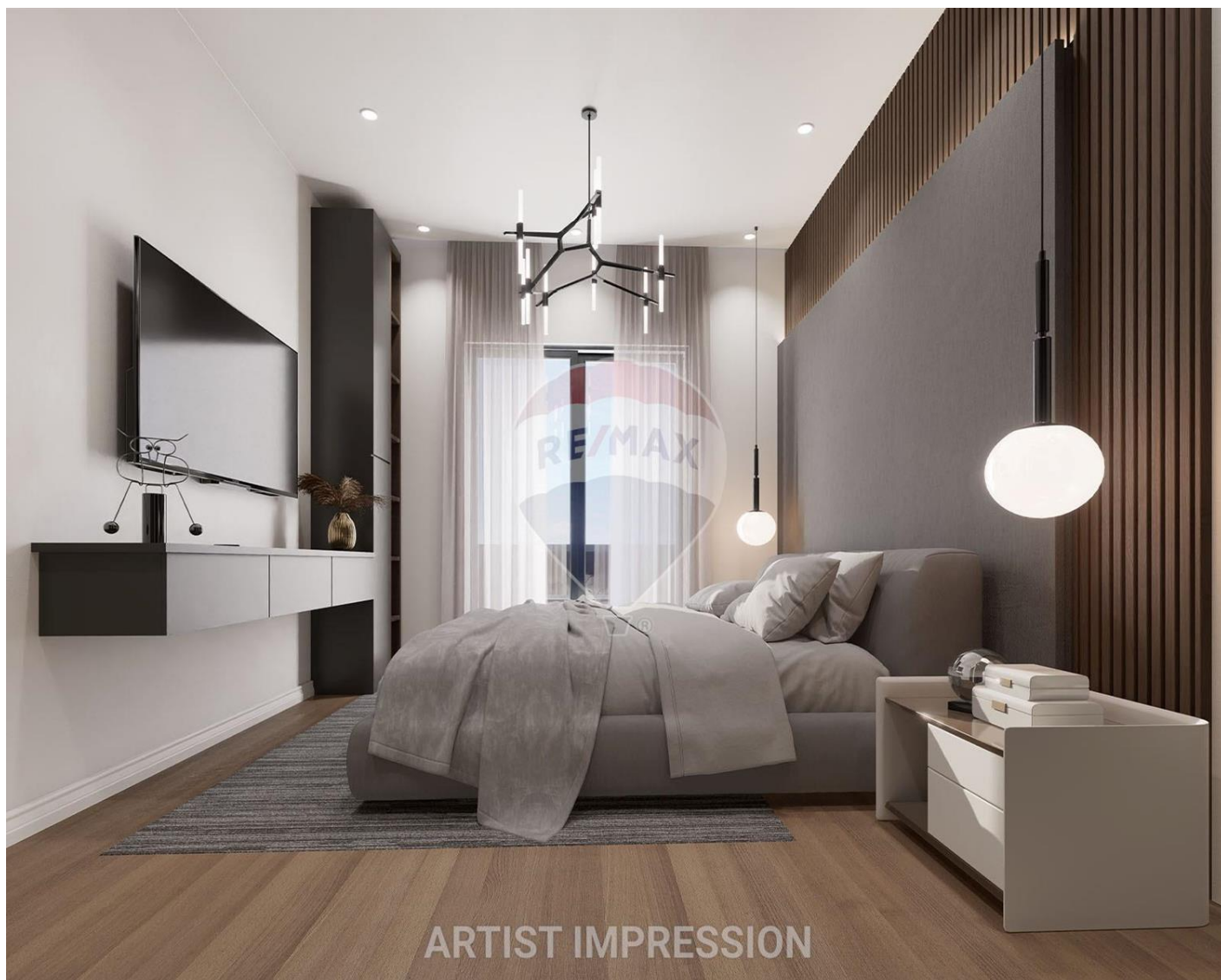


Penthouse in Paola




Paola, South



€240,000

Reference No: 240091044-366

 Total Rooms: 5

 Floor Area (m²) : 55

 Bathrooms: 1

 Bedrooms: 2

Penthouse - For Sale - Paola

Penthouse in Paola, currently under construction with completion set for mid-2026. Boasting a bright and spacious open-plan layout, 2 bedrooms including a master with en suite, and a spacious front terrace. Take advantage of the roof garden and a small pool, perfect for entertaining. The finished property will feature a lift, double-glazed windows, and high-quality finishings in facade and common areas. Situated in a peaceful neighbourhood near the city centre and various amenities. . A modern and convenient living space awaiting its future owners. Property is freehold and will be sold finished excluding bathrooms and doors. Contact your agent for further information

Features

- ✓ Lift
- ✓ Passenger Lift
- ✓ Electricity Utility
- ✓ Double Glazed

Rooms

- ✓ Kitchen/Living/Dining : 4 x 4.3 m (17.2 m2)
- ✓ Double Bedroom : 4 x 4 m (16 m2)
- ✓ Double Bedroom : 4 x 4 m (16 m2)
- ✓ Bathroom : 3 x 3 m (9 m2)
- ✓ Laundry : 3 x 2 m (6 m2)
- ✓ Open Space : 5 x 6 m (30 m2)

Gallery





ARTIST IMPRESSION



ARTIST IMPRESSION



ARTIST IMPRESSION



ARTIST IMPRESSION



ARTIST IMPRESSION



ARTIST IMPRESSION





Sean Ellul Sullivan

RE/MAX Crown - Sliema

M: 99139218

E: sean@remaxcrown.com

T: 21342410

RE/MAX Crown - Sliema

165, 166, 169, Tower Road, Sliema, Malta