

Apartment in Sliema



Sliema, Sliema and St Julians Surroundings



€1,500,000

Reference No: 240091040-654

 Total Rooms: **9**

 Floor Area (m²): **195**

 Bathrooms: **3**

 Bedrooms: **2**

Apartment - For Sale - Sliema

SLIEMA Seafront A wide fronted 195sqm seafront apartment on the sought-after sunny side of Sliema enjoying sea views from all the living areas of this lovely home and its spacious terrace. Entrance from ground floor directly to the common areas and the elevator where no steps are present from the pavement to the elevator, making it ideal for anyone with mobility difficulties. The apartment's layout consists of an entrance hall leading onto the bright and airy open-plan kitchen, living, dining room. This open plan living area flows seamlessly onto the large terrace, a perfect setting for entertaining or simply relaxing while taking in the views. The sleeping quarters include two spacious double bedrooms both of which include own ensuite bathroom/shower. A main bathroom, box-room/laundry provide additional functionality and convenience. This residence is being sold partly furnished, allowing for an easy and immediate move-in together with two car spaces interconnected, a valuable asset in this prime location.

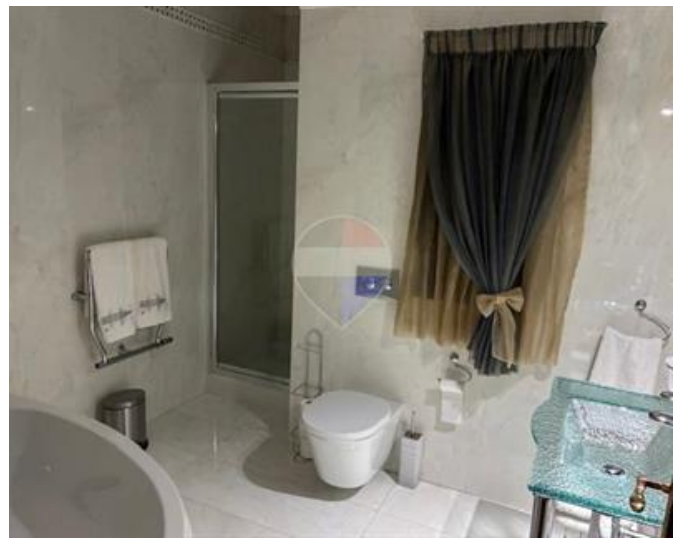
Features

Rooms

- ✓ Sitting/Dining : 7.29 x 8.45 m (61.6 m²)
- ✓ Kitchen : 3.59 x 3.32 m (11.92 m²)
- ✓ Box Room : 1.95 x 1.79 m (3.31 m²)
- ✓ Bathroom : 2.66 x 2.12 m (5.64 m²)
- ✓ Double Bedroom : 4.65 x 3.95 m (18.37 m²)
- ✓ Bathroom Ensuite : 3.32 x 1.75 m (5.64 m²)
- ✓ Double Bedroom : 3.59 x 3.57 m (12.82 m²)
- ✓ Bathroom Ensuite : 2.5 x 1.73 m (4.33 m²)
- ✓ Office / Study : 2.5 x 1.62 m (4.05 m²)
- ✓ Open Space : 7 x 2.54 m (17.78 m²)
- ✓ Open Space : 7 x 1 m (7 m²)

Gallery







Pierre Borg

RE/MAX Crown - Sliema

M: 99499337

E: pierre@remaxcrown.com

T: 21342410

RE/MAX Crown - Sliema

166, 169, Tower Road, Sliema, Malta