

Townhouse in Sliema



Sliema, Sliema and St Julians Surroundings



€0

Reference No: 240091040-615

 Total Rooms: **10**

 Floor Area (m²) : **338**

 Bathrooms: **4**

 Bedrooms: **3**

Townhouse - For Sale - Sliema

Situated on a quiet residential street in the heart of Sliema, just a short stroll from the seafront promenade and all local conveniences, this fully renovated townhouse effortlessly combines timeless charm with modern day comfort. Spread across multiple levels, the home offers four spacious double bedrooms and three bathrooms, including a luxurious en-suite in the main bedroom. The ground floor opens with a welcoming entrance hall that leads to two double bedrooms, a main bathroom, and a fully equipped separate kitchen and dining area that flows out to a delightful backyard. This level also features a street level, interconnected 1-car garage, a box room, and a secondary entrance leading directly to the upper floor via a traditional Maltese garigor spiral staircase—ideal for use as a self contained guest flatlet. A restored main staircase takes you to the first floor, where you'll find two additional double bedrooms—one with a dedicated study area, the other with a traditional Maltese balcony—as well as another main bathroom, a shower room, and a bright, spacious living area. Original features such as Maltese patterned tiles, high ceilings, and exposed wooden beams add character and authenticity, while modern comforts include full air conditioning, a pellet stove heating system, and much more. The property is crowned with a sunny roof terrace, ideal for entertaining, relaxing, or creating a rooftop garden oasis. Being offered fully furnished and freehold, this exceptional home presents a rare opportunity to acquire a stylish, move-in-ready residence in one of Malta's most desirable locations.

Features

- ✓ Ceramic Floor
- ✓ Entrance Hall
- ✓ Water Utility
- ✓ Soffit Ceilings
- ✓ Skirting
- ✓ Double Glazed
- ✓ Air Space
- ✓ Back Yard
- ✓ En Suite
- ✓ Fire Place Heating
- ✓ Electricity Utility
- ✓ Gypsum Plastering
- ✓ Wi-Fi
- ✓ Pattern Tiles
- ✓ Balcony
- ✓ Roof Terrace

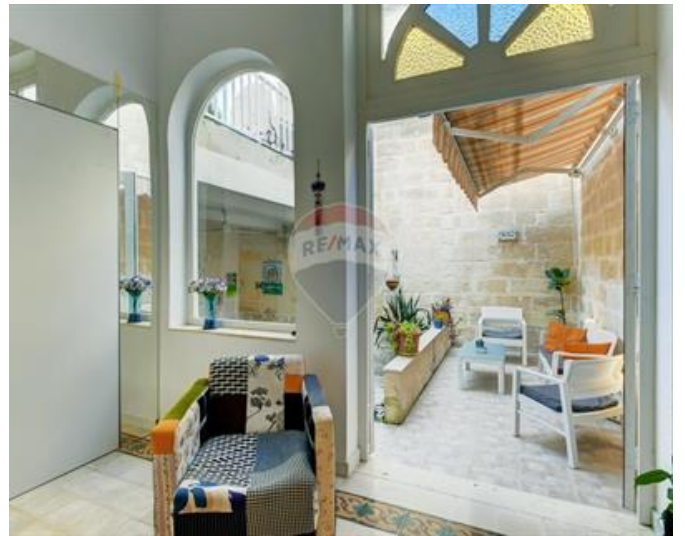
Rooms

- ✓ Hallway : 9.5 x 1.6 m (15.2 m2)
- ✓ Sitting : 4.2 x 4.3 m (18.06 m2)
- ✓ Dining : 2.7 x 4.2 m (11.34 m2)

- ✓ Kitchen : 2.9 x 4.3 m (12.47 m²)
- ✓ Open Space : 4.5 x 6.1 m (27.45 m²)
- ✓ Open Space : 1.5 x 3.1 m (4.65 m²)
- ✓ Double Bedroom : 4.3 x 6.1 m (26.23 m²)
- ✓ Double Bedroom : 3.9 x 4.2 m (16.38 m²)
- ✓ Double Bedroom : 6.1 x 4.3 m (26.23 m²)
- ✓ Bathroom : 1.5 x 2.6 m (3.9 m²)
- ✓ Open Space : 4.6 x 13 m (59.8 m²)
- ✓ Open Space : 3 x 4.9 m (14.7 m²)
- ✓ Guest Toilet : 3 x 3 m (9 m²)
- ✓ Bathroom Ensuite : 2 x 2 m (4 m²)
- ✓ Bathroom Ensuite : 2 x 2 m (4 m²)

Gallery











Pierre Borg

RE/MAX Crown - Sliema

M: 99499337

E: pierre@remaxcrown.com

T: 21342410

RE/MAX Crown - Sliema

166, 169, Tower Road, Sliema, Malta