

Apartment in Sliema



Sliema, Sliema and St Julians Surroundings



€1,425,000

Reference No: 240091001-394

 Total Rooms: **9**

 Floor Area (m²) : **195**

 Bathrooms: **3**

 Bedrooms: **3**

Apartment - For Sale - Sliema

Sliema – This Seafront Apartment situated in a prestigious Special Designated Area. A spacious three-bedroom apartment boasts stunning sea views from a generous 30 sqm terrace. Upon entering into the apartment you are welcomed by an inviting entrance hall leading into a bright and airy open-plan living, sitting, and dining area. Wall to wall apertures flood the apartment with natural light and provide seamless access to the terrace, perfect for entertaining or relaxing while enjoying the views. The property also features a separate kitchen, a guest toilet, and a dedicated laundry room with access to a clothes drying area. The sleeping quarters include three large bedrooms, one of which benefits from an en-suite shower room, as well as a main bathroom serving the other bedrooms.

Features

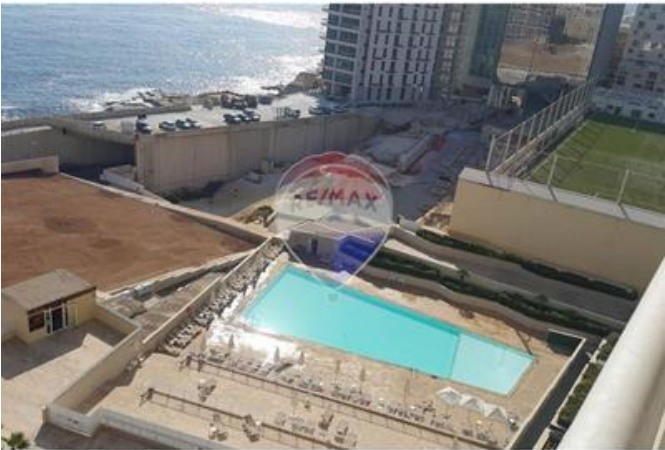
- ✓ Lift
- ✓ En Suite
- ✓ Water Utility
- ✓ PVC Piping
- ✓ Skirting
- ✓ Well
- ✓ Pool Deck
- ✓ Ceramic Floor
- ✓ Entrance Hall
- ✓ Electricity Utility
- ✓ A/C
- ✓ Terrace
- ✓ Balcony
- ✓ Communal Pool

Rooms

- ✓ Kitchen/Living/Dining : 7.5 x 5.2 m (39 m2)
- ✓ Kitchen : 3 x 2.6 m (7.8 m2)
- ✓ Guest Toilet : 2.5 x 1.5 m (3.75 m2)
- ✓ Laundry : 2.5 x 1.5 m (3.75 m2)
- ✓ Open Space : 1.8 x 1 m (1.8 m2)
- ✓ Double Bedroom : 6 x 3.5 m (21 m2)
- ✓ Bathroom Ensuite : 2.5 x 2 m (5 m2)
- ✓ Double Bedroom : 5 x 3 m (15 m2)

- ✓ Double Bedroom : 4.3 x 3 m (12.9 m²)
- ✓ Bathroom : 3 x 2 m (6 m²)
- ✓ Hallway : 5 x 2.5 m (12.5 m²)
- ✓ Hall : 13 x 1.2 m (15.6 m²)

Gallery





Peter J. Sullivan

RE/MAX Crown - Sliema

M: 99494617

E: peter@remaxcrown.com

T: 21342410

RE/MAX Crown - Sliema

166, 169, Tower Road, Sliema, Malta