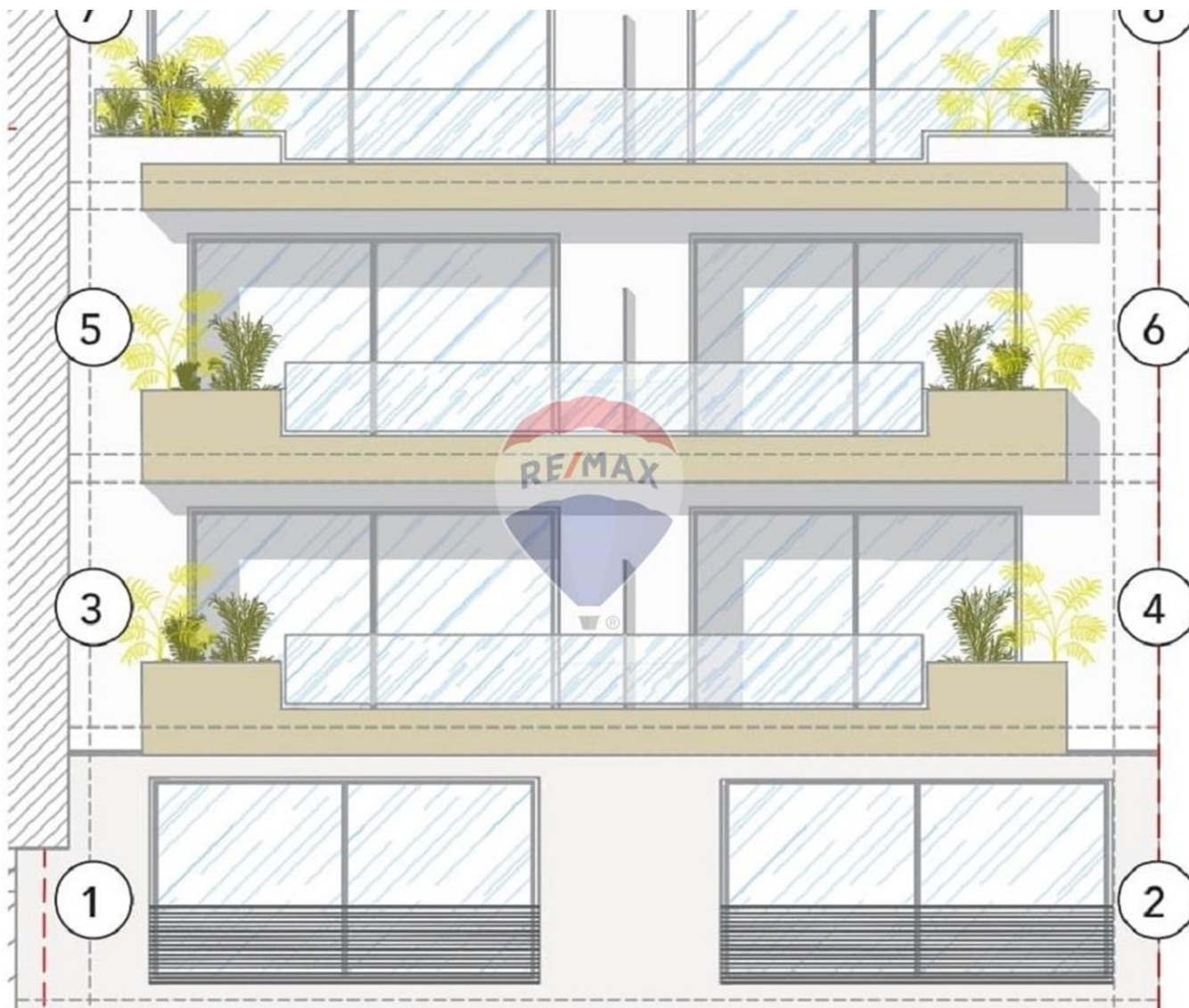


# Apartment in Mellieha



Mellieha, North



**€690,000**

Reference No: 240041072-58

 Total Rooms: **9**

 Floor Area (m<sup>2</sup>): **183**

 Bathrooms: **3**

 Bedrooms: **3**

# Apartment - For Sale - Mellieha

MELLIEHA - A stunning three bedroom ground floor apartment forming part of a small block of 8 units, with unobstructed views. Situated in the niche community of Mellieha, a countryside hamlet in the village, but in close proximity of all amenities. The property comprises three double bedrooms (two en-suite) main with walk-in wardrobe and large back balcony. The apartment will be sold shell & due to complete December 2024.

## Features

- ✓ Lift
- ✓ Water Utility
- ✓ Balcony

## Rooms

- ✓ Kitchen/Dining : 4.7 x 5.22 m (24.53 m<sup>2</sup>)
- ✓ Living : 4.06 x 4.73 m (19.2 m<sup>2</sup>)
- ✓ Double Bedroom : 4 x 4.4 m (17.6 m<sup>2</sup>)
- ✓ Shower Ensuite : 1.74 x 1.5 m (2.61 m<sup>2</sup>)
- ✓ Walk In Wardrobe : 1.74 x 1.5 m (2.61 m<sup>2</sup>)
- ✓ Double Bedroom : 3.73 x 3.51 m (13.09 m<sup>2</sup>)
- ✓ Double Bedroom : 3.99 x 3.86 m (15.4 m<sup>2</sup>)
- ✓ Bathroom : 2.47 x 2.12 m (5.24 m<sup>2</sup>)
- ✓ Open Space : 5.1 x 5.48 m (27.95 m<sup>2</sup>)
- ✓ Shower Ensuite : 1.8 x 2.47 m (4.45 m<sup>2</sup>)

# Gallery





**Darryl Joseph Vella**

RE/MAX Park Estates - St Paul's Bay

M: 99845631

E: [dvella@remax.com.mt](mailto:dvella@remax.com.mt)

T: 21579747

**RE/MAX Park Estates - St Paul's Bay**

Park Estates Ltd, Mosta Road, St Paul's Bay, Malta