

Townhouse in Sliema



Sliema, Sliema and St Julians Surroundings



€990,000

Reference No: 240041072-224

 Total Rooms: 7

 Floor Area (m²) : 130

 Bathrooms: 1

 Bedrooms: 3

Townhouse - For Sale - Sliema

Nestled in the heart of Sliema, this wide-fronted townhouse is set within an Urban Conservation Area on a quiet secondary road, while still being just moments away from all daily amenities. Upon entering, you are welcomed by a charming entrance hall featuring beautiful traditional patterned tiles that perfectly complement the property's tasteful blend of classic character and contemporary design. The home is being sold finished and fully furnished to a high modern standard, with quality finishes and meticulous attention to detail throughout. The ground floor offers a fully equipped kitchen and dining area boasting an impressive 5-metre kitchen, a separate comfortable sitting room, a main bathroom, and a private backyard of approximately 20sqm, ideal for outdoor dining or relaxation. The first floor hosts the sleeping quarters, comprising two spacious double bedrooms and a single bedroom. On the top floor, you'll find a practical laundry and washroom area leading onto a generous roof terrace of approximately 40sqm, providing the perfect space for entertaining or enjoying the outdoors. An optional two-car-plus garage, located just a two-minute walk from the property, is available for an additional €130,000. This is a wonderful opportunity to own a beautifully restored townhouse that effortlessly combines timeless charm with modern living in one of Malta's most sought-after locations. Feel free to schedule your viewing today!

Features

- ✓ Ceramic Floor
- ✓ Water Utility
- ✓ Gypsum Plastering
- ✓ A/C
- ✓ Yard
- ✓ Well
- ✓ Entrance Hall
- ✓ Electricity Utility
- ✓ Towel Warmers
- ✓ Double Glazed
- ✓ Air Space
- ✓ Roof Terrace

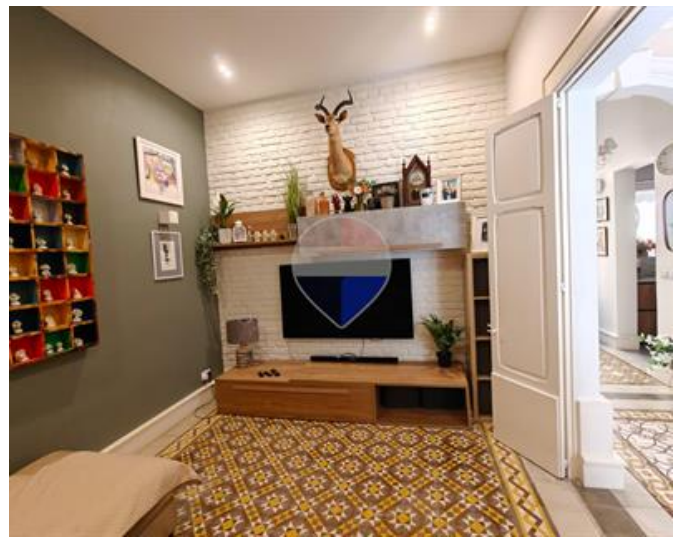
Rooms

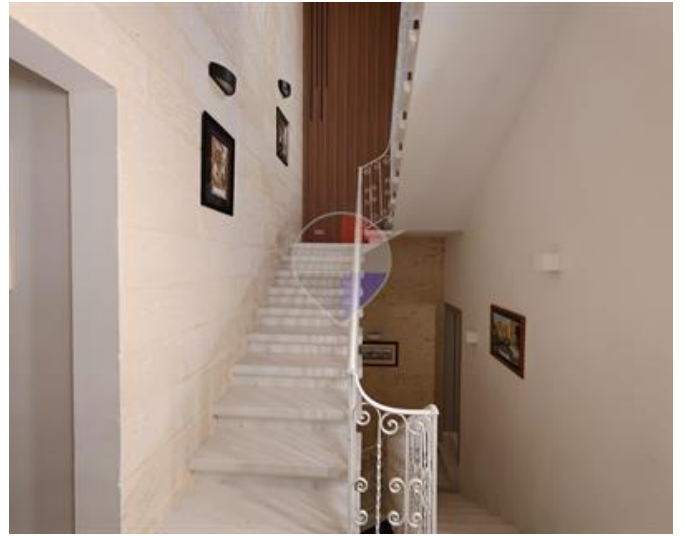
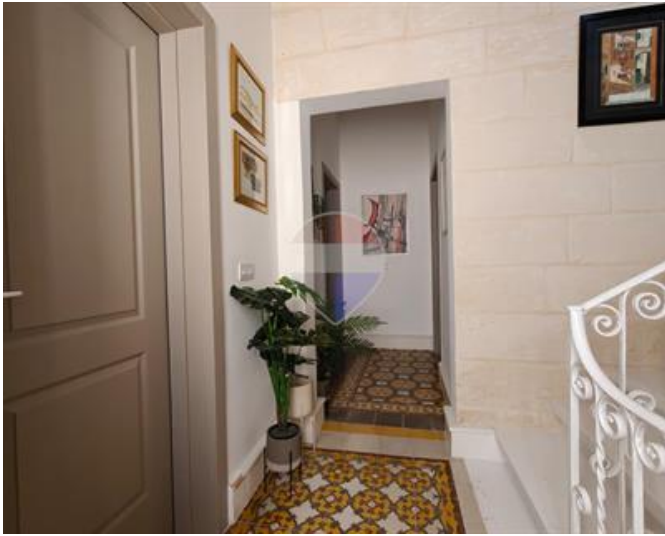
- ✓ Living : 3.85 x 3.25 m (12.51 m²)
- ✓ Kitchen/Dining : 3.39 x 3.3 m (11.19 m²)
- ✓ Hall : 4.1 x 1.6 m (6.56 m²)
- ✓ Double Bedroom : 3.8 x 3.6 m (13.68 m²)
- ✓ Double Bedroom : 3.9 x 3.2 m (12.48 m²)
- ✓ Single Bedroom : 3.2 x 2.2 m (7.04 m²)

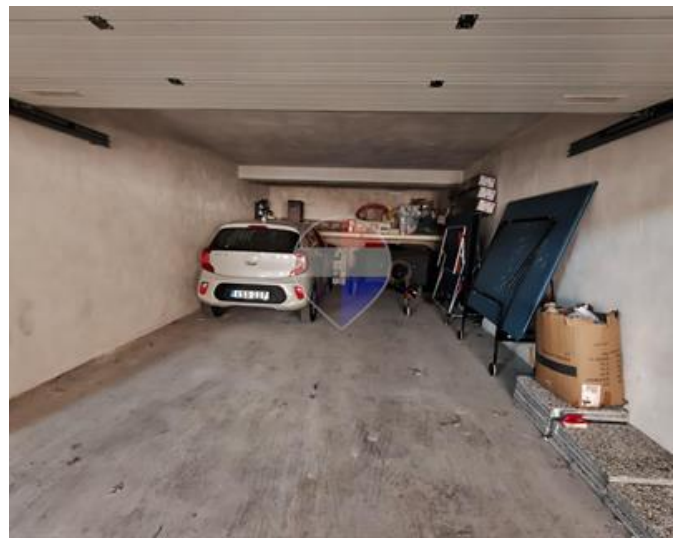
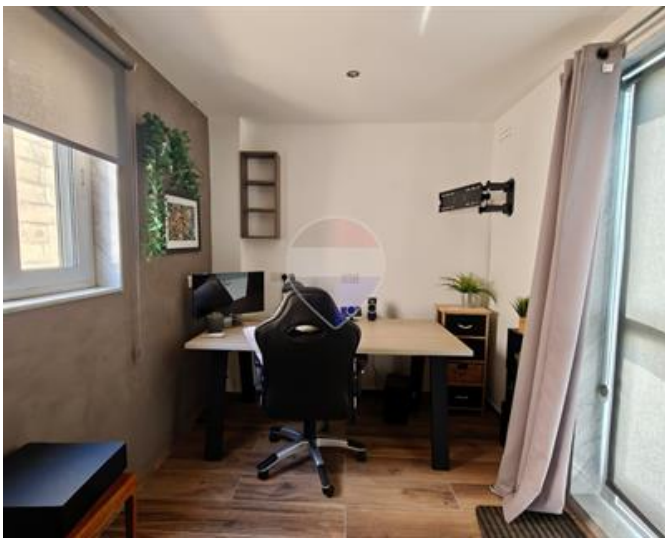
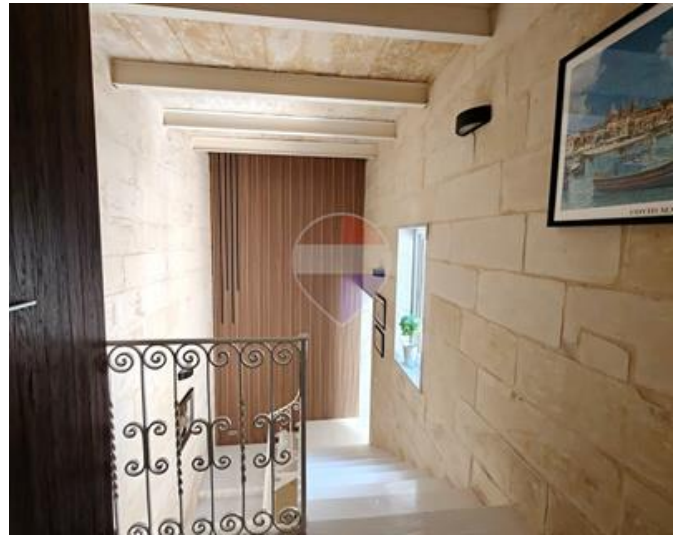
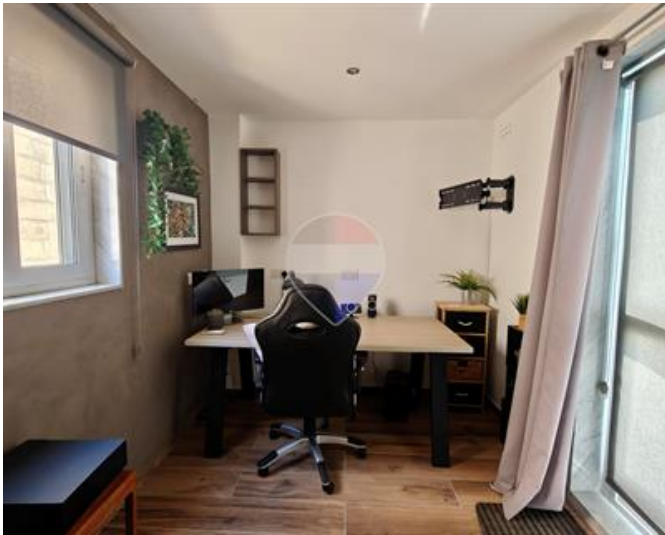
- ✓ Hallway : 2.3 x 1.15 m (2.64 m²)
- ✓ Bathroom : 2.4 x 1.7 m (4.08 m²)
- ✓ Laundry : 3.2 x 3.3 m (10.56 m²)
- ✓ Hall : 4.1 x 1.6 m (6.56 m²)
- ✓ Open Space : 2.2 x 0.96 m (2.11 m²)
- ✓ Open Space : 3.1 x 0.77 m (2.39 m²)
- ✓ Open Space : 5.82 x 3 m (17.46 m²)
- ✓ Open Space : 8.4 x 4.4 m (36.96 m²)

Gallery













Darryl Joseph Vella

RE/MAX Park Estates - St Paul's Bay

M: 99845631

E: dvella@remax.com.mt

T: 21579747

RE/MAX Park Estates - St Paul's Bay

Park Estates Ltd, Mosta Road, St Paul's Bay, Malta