

# Apartment in Mellieha



**Mellieha, North**



**€400,000**

Reference No: 240041072-223

 Total Rooms: 7

 Floor Area (m<sup>2</sup>) : 130

 Bathrooms: 2

 Bedrooms: 3

# Apartment - For Sale - Mellieha

Mellieha - Three bedroom. Located in one of Mellieha's most sought-after residential areas, this bright and spacious fully furnished corner apartment measuring approximately 135sqm offers comfortable living and open views. The property comprises a welcoming open-plan kitchen, living and dining area, three double bedrooms, two bathrooms, a walk-in wardrobe, a side balcony, and a large front corner terrace enjoying unobstructed views. Being sold freehold and ready to move into, this well-presented home is an excellent choice for first-time buyers, families, those looking to downsize, or investors seeking a solid rental opportunity. Contact us today to arrange a viewing.

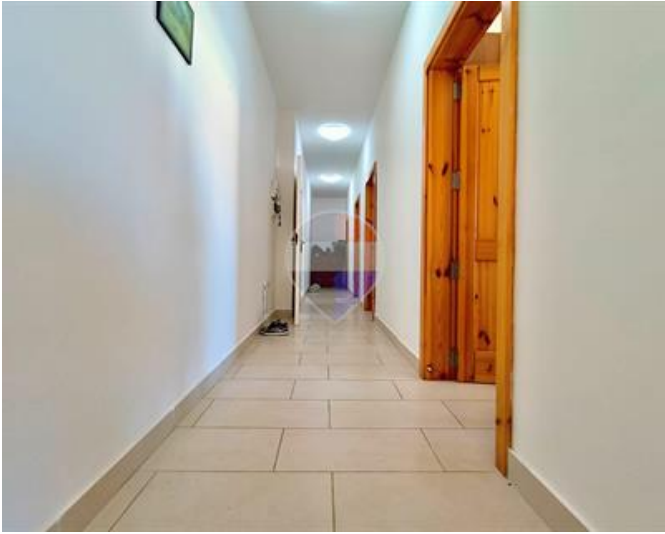
## Features

- ✓ Lift
- ✓ En Suite
- ✓ Water Utility
- ✓ A/C
- ✓ Double Glazed
- ✓ Balcony
- ✓ Ceramic Floor
- ✓ Walk in Wardrobe
- ✓ Electricity Utility
- ✓ Skirting
- ✓ Terrace

## Rooms

- ✓ Kitchen/Living/Dining : 5.54 x 4.7 m (26.04 m<sup>2</sup>)
- ✓ Double Bedroom : 4.72 x 3.15 m (14.87 m<sup>2</sup>)
- ✓ Double Bedroom : 4.01 x 2.8 m (11.23 m<sup>2</sup>)
- ✓ Double Bedroom : 3.38 x 2.8 m (9.46 m<sup>2</sup>)
- ✓ Walk In Wardrobe : 1.6 x 3.35 m (5.36 m<sup>2</sup>)
- ✓ Bathroom : 4.09 x 1.9 m (7.77 m<sup>2</sup>)
- ✓ Bathroom Ensuite : 3.9 x 1.37 m (5.34 m<sup>2</sup>)
- ✓ Hallway : 1.3 x 11.5 m (14.95 m<sup>2</sup>)
- ✓ Open Space : 1.5 x 4 m (6 m<sup>2</sup>)
- ✓ Open Space : 0.8 x 1.5 m (1.2 m<sup>2</sup>)

# Gallery







**Darryl Joseph Vella**

RE/MAX Park Estates - St Paul's Bay

M: 99845631

E: [dvella@remax.com.mt](mailto:dvella@remax.com.mt)

T: 21579747

**RE/MAX Park Estates - St Paul's Bay**

Park Estates Ltd, Mosta Road, St Paul's Bay, Malta