

Penthouse in Swieqi




Swieqi, Sliema and St Julians Surroundings



€884,000

Reference No: 240041072-142

 Total Rooms: 7

 Floor Area (m²) : 283

 Bathrooms: 2

 Bedrooms: 3

Penthouse - For Sale - Swieqi

Swieqi - Located in the highly sought-after area of Swieqi, these Apartments and Penthouse offer the perfect balance of tranquility and urban convenience, with easy access to key amenities, schools, and entertainment. Each unit boasts an exceptionally generous layout, designed to maximize living space and provide comfort for families or individuals seeking a modern, open-plan living environment. Built to the highest standards, every apartment is finished with premium materials, ensuring durability, elegance, and a sophisticated touch that complements contemporary living. Being sold finished excluding doors and bathrooms.

Features

- ✓ En Suite
- ✓ Walk in Wardrobe
- ✓ Balcony

Rooms

- ✓ Kitchen/Living/Dining : 5.7 x 6.1 m (34.77 m²)
- ✓ Double Bedroom : 4.3 x 4.2 m (18.06 m²)
- ✓ Double Bedroom : 4.3 x 3.2 m (13.76 m²)
- ✓ Double Bedroom : 4.2 x 3.2 m (13.44 m²)
- ✓ Hall : 2 x 9 m (18 m²)
- ✓ Bathroom : 1.7 x 2.3 m (3.91 m²)
- ✓ Bathroom Ensuite : 1.7 x 2.3 m (3.91 m²)
- ✓ Walk In Wardrobe : 2 x 1.6 m (3.2 m²)
- ✓ Open Space : 5.7 x 2.7 m (15.39 m²)
- ✓ Open Space : 3.2 x 1.9 m (6.08 m²)
- ✓ Open Space : 1 x 115.4 m (115.4 m²)

Gallery



ARTIST IMPRESSION



ARTIST IMPRESSION



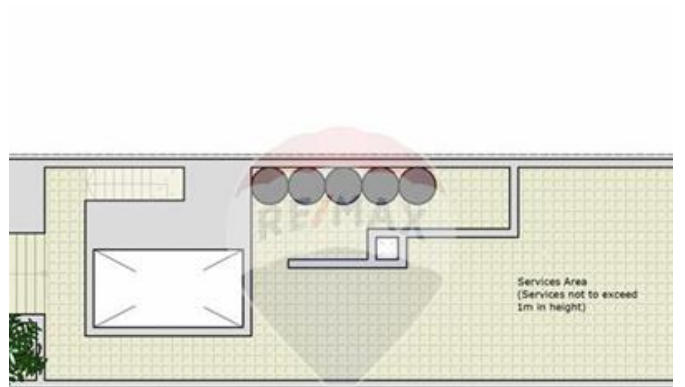
ARTIST IMPRESSION



ARTIST IMPRESSION



ARTIST IMPRESSION



of top pool, sun lounge and BBQ area

Dm²



LEVELS 1, 2, 3 - 3 Bedrooms apartments
GROSS INTERNAL AREA - 153.89m²
GROSS EXTERNAL AREA - 18m²



PENTHOUSE - 3 Bedrooms apartment with Jacuzzi terrace, large
roof top pool, sun lounge and BBQ area
GROSS INTERNAL AREA - 134.76m²
GROSS EXTERNAL AREA - 32.70m²



Darryl Joseph Vella

RE/MAX Park Estates - St Paul's Bay

M: 99845631

E: dvella@remax.com.mt

T: 21579747

RE/MAX Park Estates - St Paul's Bay

Park Estates Ltd, Mosta Road, St Paul's Bay, Malta