

# Apartment in St Julian's



## St Julian's, Sliema and St Julians Surroundings



**€530,000**

Reference No: 240041048-354

 Total Rooms: **8**

 Floor Area (m<sup>2</sup>): **167**

 Bathrooms: **2**

 Bedrooms: **3**

# Apartment - For Sale - St Julian's

Property for sale in St. Julian's located within walking distance to Balluta Bay. This 160m<sup>2</sup> apartment features a spacious split-level open plan, providing a practical layout for the kitchen, living, and dining areas. A hallway leads to the sleeping quarters, which consist of three double bedrooms. The main bedroom includes an ensuite bathroom, and there is also a separate main bathroom. The property is being sold finished and freehold. Its generous internal area and proximity to the seafront make it a solid option for a family home or an excellent rental investment.

## Features

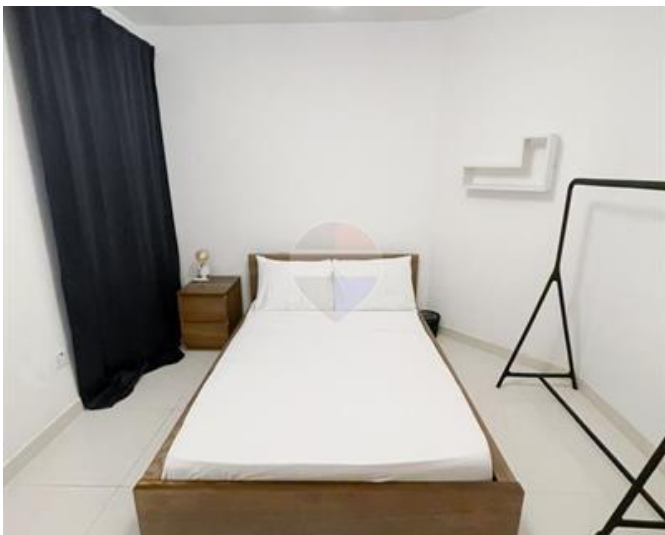
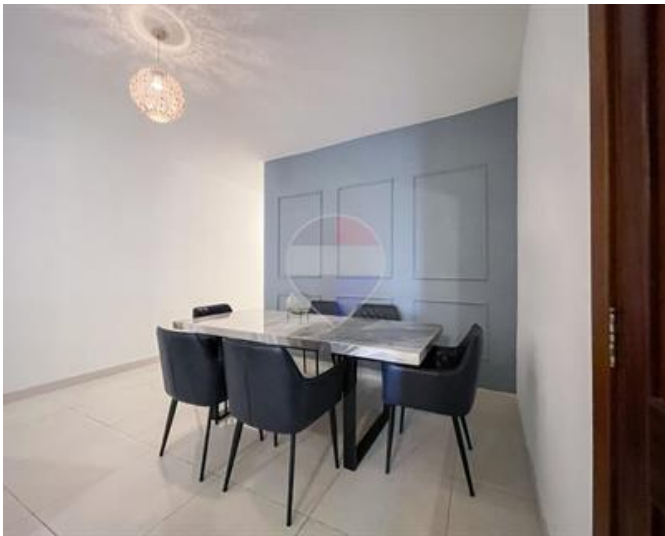
- ✓ Ceramic Floor
- ✓ Water Utility
- ✓ Soffit Ceilings
- ✓ Skirting
- ✓ Balcony
- ✓ En Suite
- ✓ Electricity Utility
- ✓ A/C
- ✓ Double Glazed

## Rooms

- ✓ Kitchen/Living/Dining : 6.36 x 5.48 m (34.85 m<sup>2</sup>)
- ✓ Double Bedroom : 6.13 x 5.05 m (30.96 m<sup>2</sup>)
- ✓ Double Bedroom : 4.07 x 3.25 m (13.23 m<sup>2</sup>)
- ✓ Double Bedroom : 3.92 x 3.25 m (12.74 m<sup>2</sup>)
- ✓ Box Room : 1.93 x 1.3 m (2.51 m<sup>2</sup>)
- ✓ Bathroom : 2.88 x 1.3 m (3.74 m<sup>2</sup>)
- ✓ Bathroom Ensuite : 2.59 x 1.3 m (3.37 m<sup>2</sup>)
- ✓ Walk In Wardrobe : 4.29 x 1.8 m (7.72 m<sup>2</sup>)
- ✓ Hallway : 1.2 x 13 m (15.6 m<sup>2</sup>)
- ✓ Open Space : 3 x 1.28 m (3.84 m<sup>2</sup>)
- ✓ Open Space : 3 x 128 m (384 m<sup>2</sup>)

# Gallery















**Schevon Camilleri**

RE/MAX Park Estates - St Paul's Bay

M: 79450585

E: [schevon@remax.com.mt](mailto:schevon@remax.com.mt)

T: 21579747

**RE/MAX Park Estates - St Paul's Bay**

Park Estates Ltd, Mosta Road, St Paul's Bay, Malta