

Apartment in Mellieha



Mellieha, North



€558,000

Reference No: 240041036-262

 Total Rooms: **6**

 Floor Area (m²) : **161**

 Bathrooms: **2**

 Bedrooms: **3**

Apartment - For Sale - Mellieha

MELLIEHA - A brand new development in the heart of Mellieha with magnificent views valley and distant sea views. This spacious second-floor apartment is being sold luxuriously finished including bathrooms, soffit ceilings and internal doors. The layout offers a spacious 60m² open plan kitchen, living, and dining area overlooking a spacious front terrace enjoying views. At the back of the apartment one finds three large double bedrooms, main with en-suite, large bathroom, guest toilet and a pantry/washroom. Each apartment has a front terrace and back terrace. A perfect family home.

Features

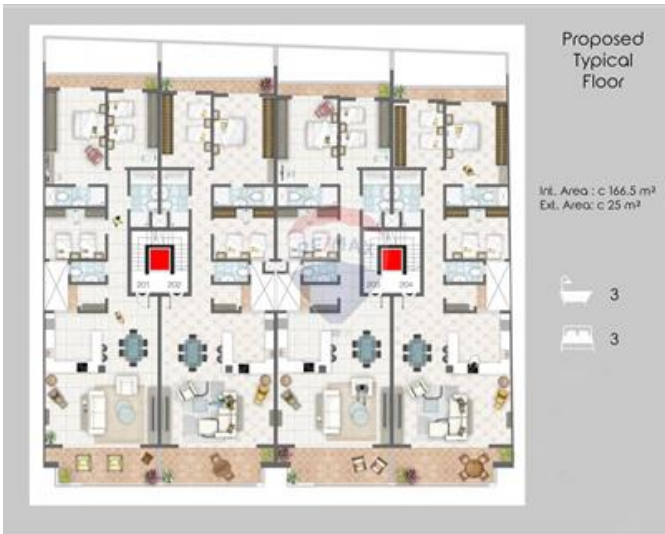
- ✓ Ceramic Floor
- ✓ Pool
- ✓ Balcony
- ✓ En Suite
- ✓ Terrace
- ✓ Deck

Rooms

- ✓ Double Bedroom : 4 x 5.8 m (23.2 m²)
- ✓ Double Bedroom : 3.2 x 4.8 m (15.36 m²)
- ✓ Double Bedroom : 3.7 x 3 m (11.1 m²)
- ✓ Kitchen/Living/Dining : 7.2 x 9 m (64.8 m²)
- ✓ Bathroom Ensuite : 3 x 1.2 m (3.6 m²)
- ✓ Bathroom : 3.5 x 1.7 m (5.95 m²)

Gallery







Stephen Borg

RE/MAX Park Estates - St Paul's Bay

M: 79604744

E: steve@remax.com.mt

T: 21579747

RE/MAX Park Estates - St Paul's Bay

Park Estates Ltd, Mosta Road, St Paul's Bay, Malta