

# Terraced House in Marsaxlokk



**Marsaxlokk, South**



**€850,000**

Reference No: 240041024-578

 Total Rooms: **10**

 Floor Area (m<sup>2</sup>) : **162**

 Bathrooms: **2**

 Bedrooms: **3**

# Terraced House - For Sale - Marsaxlokk

Marsaxlokk - Terraced House situated in a quiet residential area of Marsaxlokk, just 200 meters from the seafront, this corner terraced house offers a bright and spacious layout ideal for family living. Built on a plot of 17.56m by 6.69m, the property benefits from abundant natural light throughout due to its corner position. Upon entrance, one is welcomed by a separate living area, leading to a fully equipped kitchen and dining space featuring an impressive five-meter kitchen. The property comprises a main bathroom and three well-sized bedrooms, with the master bedroom enjoying a walk-in wardrobe of approximately 18 square meters. At street level, the house includes a two-car garage, adding significant convenience and value. On the upper level, a large washroom of approximately 21 square meters offers potential for a kitchenette and opens onto two terraces with a combined area of around 60 square meters, ideal for entertaining or outdoor relaxation. Being sold fully furnished and freehold, this home is ready to move into and perfectly suited for a growing family seeking comfort, space, and proximity to the seafront. Viewing is highly recommended.

## Features

- ✓ Ceramic Floor
- ✓ Walk in Wardrobe
- ✓ Electricity Utility
- ✓ Double Glazed
- ✓ Balcony
- ✓ Video Intercom
- ✓ En Suite
- ✓ Water Utility
- ✓ A/C
- ✓ Partially Furnished
- ✓ Roof Terrace
- ✓ Solar Panels

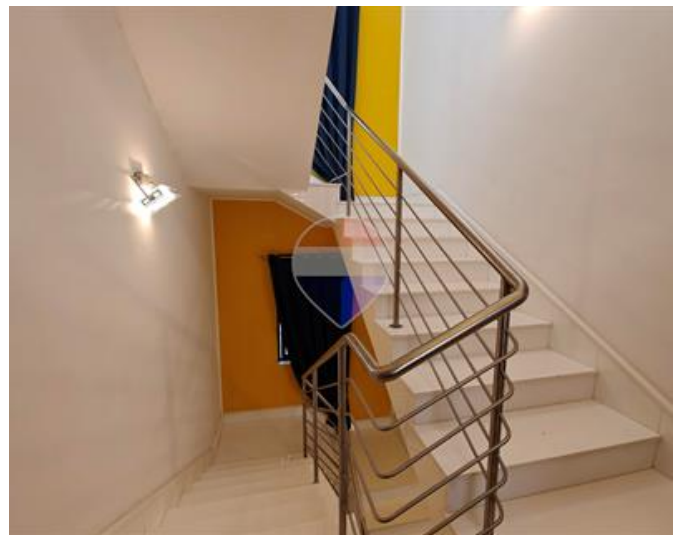
## Rooms

- ✓ Living : 4.42 x 3.94 m (17.41 m2)
- ✓ Kitchen/Dining : 4.26 x 3.85 m (16.4 m2)
- ✓ Hall : 1.27 x 2.45 m (3.11 m2)
- ✓ Double Bedroom : 3.93 x 4.38 m (17.21 m2)
- ✓ Double Bedroom : 5.35 x 3.96 m (21.19 m2)

- ✓ Double Bedroom : 2.95 x 2.98 m (8.79 m<sup>2</sup>)
- ✓ Hall : 1.27 x 2.45 m (3.11 m<sup>2</sup>)
- ✓ Hall : 1.27 x 2.45 m (3.11 m<sup>2</sup>)
- ✓ Bathroom : 2.47 x 1.75 m (4.32 m<sup>2</sup>)
- ✓ Bathroom : 2.4 x 2.87 m (6.89 m<sup>2</sup>)
- ✓ Laundry : 3.64 x 5.82 m (21.18 m<sup>2</sup>)
- ✓ Walk In Wardrobe : 2.7 x 3 m (8.1 m<sup>2</sup>)
- ✓ Office / Study : 3.63 x 2.74 m (9.95 m<sup>2</sup>)
- ✓ Open Space : 5 x 0.6 m (3 m<sup>2</sup>)
- ✓ Open Space : 4 x 0.6 m (2.4 m<sup>2</sup>)
- ✓ Open Space : 3 x 0.6 m (1.8 m<sup>2</sup>)
- ✓ Open Space : 7.31 x 5.83 m (42.62 m<sup>2</sup>)
- ✓ Open Space : 2.47 x 0.79 m (1.95 m<sup>2</sup>)
- ✓ Open Space : 5.52 x 3.9 m (21.53 m<sup>2</sup>)

# Gallery









**John Calleja**

RE/MAX Park Estates - St Paul's Bay

M: 79803764

E: [jcalleja@remax.com.mt](mailto:jcalleja@remax.com.mt)

T: 21579747

**RE/MAX Park Estates - St Paul's Bay**

Park Estates Ltd, Mosta Road, St Paul's Bay, Malta