

Apartment in Sliema



Sliema, Sliema and St Julians Surroundings



€650,000

Reference No: 240041004-4830

 Total Rooms: **7**

 Floor Area (m²) : **103**

 Bathrooms: **2**

 Bedrooms: **2**

Apartment - For Sale - Sliema

Sliema - Older type sea front apartment, consists of an entrance hall leading to a formal living room, main bathroom, two bedrooms, amin having an en-suite shower and a balcony, and a hallway leading to a combined separate fitted kitchen, dining/living, and a front balcony where one can enjoy breathtaking views of Balluta Bay. Worth viewing. An optional two-car garage is available, located a corner away from this block.

Features

- ✓ Ceramic Floor
- ✓ Marble Floor
- ✓ Electricity Utility
- ✓ Video Intercom
- ✓ Entrance Hall
- ✓ Water Utility
- ✓ Balcony

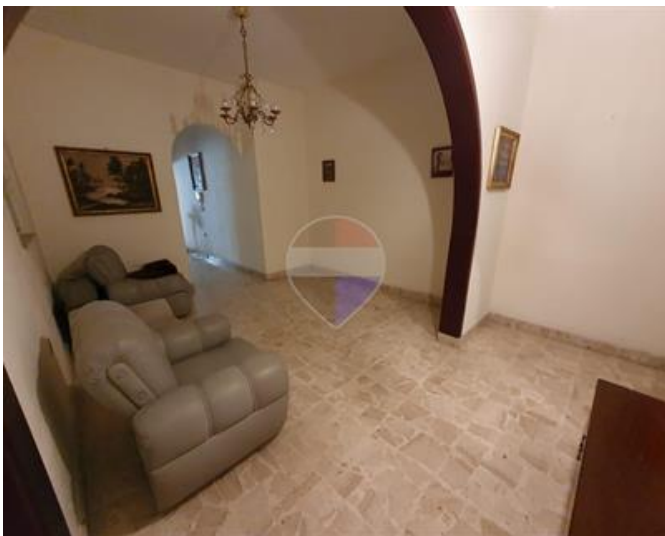
Rooms

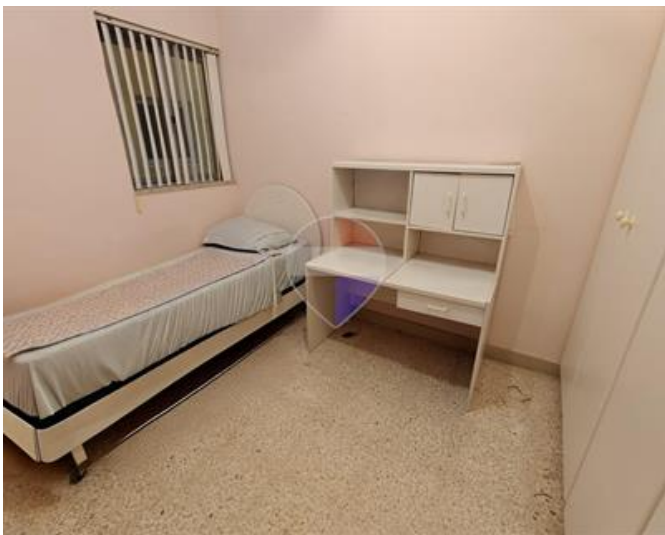
- ✓ Kitchen : 2.9 x 3.1 m (8.99 m2)
- ✓ Living : 3.3 x 3.3 m (10.89 m2)
- ✓ Living/Dining : 3.1 x 4.2 m (13.02 m2)
- ✓ Hall : 3.6 x 1.2 m (4.32 m2)
- ✓ Double Bedroom : 4.2 x 3 m (12.6 m2)
- ✓ Double Bedroom : 2.9 x 3.1 m (8.99 m2)
- ✓ Bathroom : 1.6 x 2.1 m (3.36 m2)
- ✓ Bathroom Ensuite : 1.8 x 1.5 m (2.7 m2)
- ✓ Hallway : 4.8 x 1.1 m (5.28 m2)
- ✓ Open Space : 1.1 x 1.5 m (1.65 m2)
- ✓ Open Space : 1.1 x 1.3 m (1.43 m2)

Gallery











Roderick Cucciardi

RE/MAX Park Estates - St Paul's Bay

M: 79461080

E: roderick@remax.com.mt

T: 21579747

RE/MAX Park Estates - St Paul's Bay

Park Estates Ltd, Mosta Road, St Paul's Bay, Malta