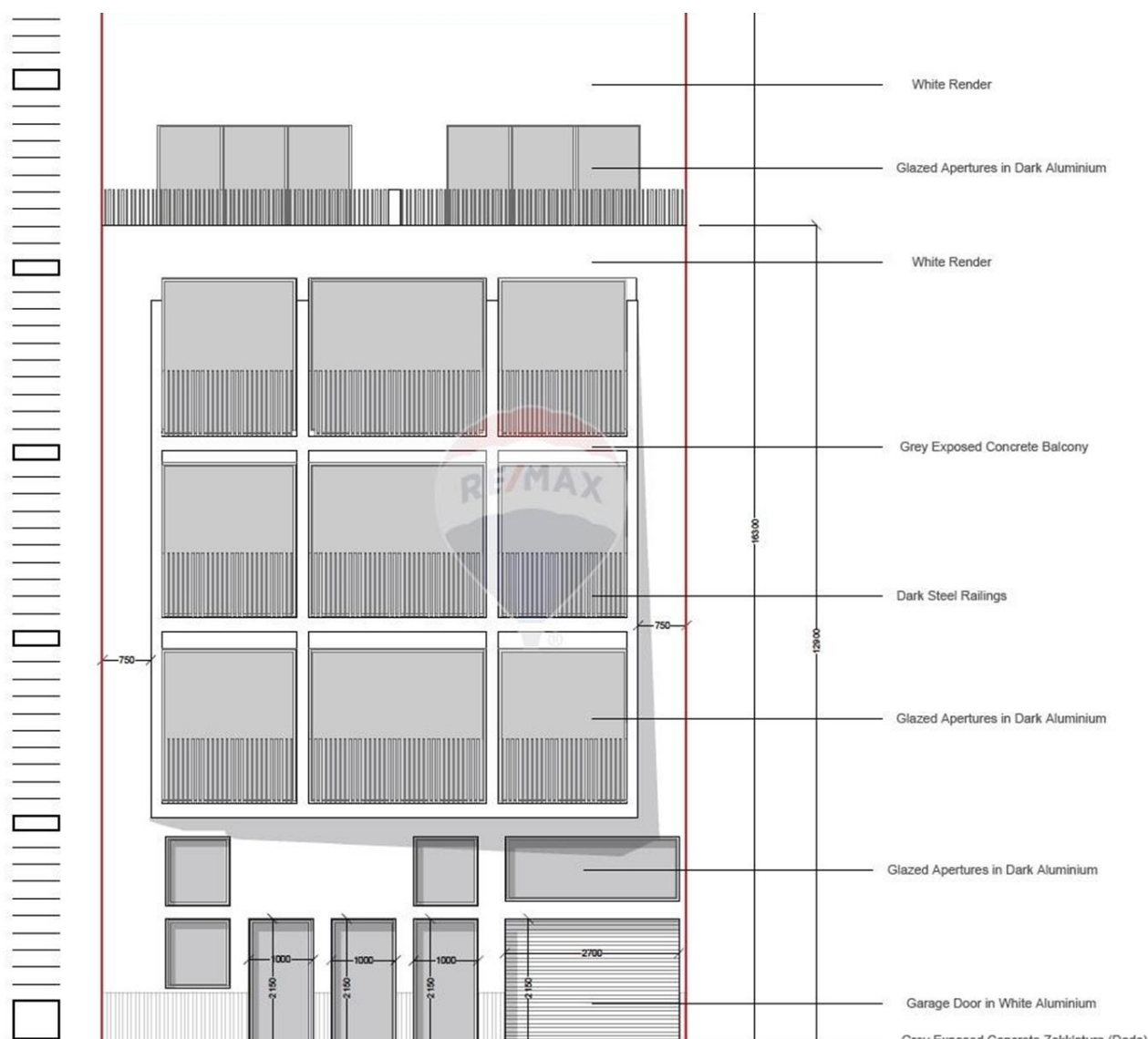


# Penthouse in Santa Venera



## Santa Venera, Central



€470,000

Reference No: 240041004-4808

 Total Rooms: 6

 Floor Area (m<sup>2</sup>) : 120

 Bathrooms: 2

 Bedrooms: 3

# Penthouse - For Sale - Santa Venera

Santa Venera – Located in the sought-after area of Fleur De Lys, Santa Venera, this well-planned Penthouse offers a practical layout and excellent potential for both residential living and rental investment. The property boasts an internal area of approximately 100m<sup>2</sup> and an external area of 20m<sup>2</sup>, including front and back terraces that provide ample natural light and outdoor space. Upon entering, one finds a spacious open-plan kitchen, living, and dining area leading to the front terrace. The layout further includes three bedrooms, with the main bedroom featuring an en-suite shower, a main bathroom, laundry room and a back terrace. It has its own airspace with space for a splash pool. The Penthouse will be sold finished, excluding internal doors and bathrooms, allowing buyers to personalise the final touches to their taste. The project is expected to be completed by the end of December 2026.

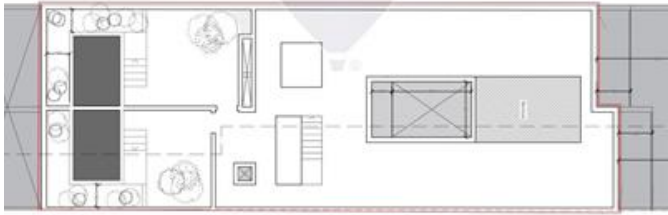
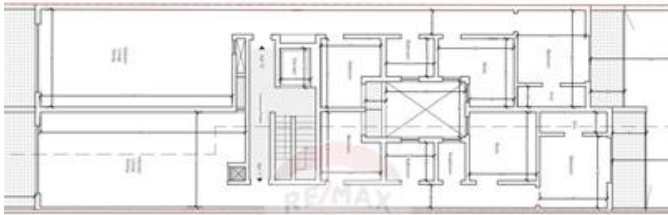
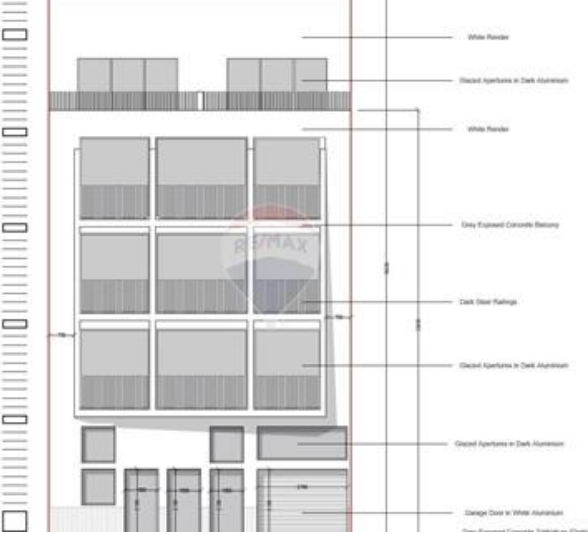
## Features

- ✓ Ceramic Floor
- ✓ Water Utility
- ✓ Gypsum Plastering
- ✓ Double Glazed
- ✓ Balcony
- ✓ En Suite
- ✓ Electricity Utility
- ✓ Skirting
- ✓ Terrace

## Rooms

- ✓ Kitchen/Living/Dining : 4.3 x 8.4 m (36.12 m<sup>2</sup>)
- ✓ Hallway : 1 x 7.6 m (7.6 m<sup>2</sup>)
- ✓ Double Bedroom : 2.6 x 3.1 m (8.06 m<sup>2</sup>)
- ✓ Double Bedroom : 4.2 x 3.1 m (13.02 m<sup>2</sup>)
- ✓ Double Bedroom : 2.9 x 3 m (8.7 m<sup>2</sup>)
- ✓ Bathroom Ensuite : 2.9 x 1 m (2.9 m<sup>2</sup>)
- ✓ Bathroom : 2.1 x 1.6 m (3.36 m<sup>2</sup>)

# Gallery





**Roderick Cucciardi**

RE/MAX Park Estates - St Paul's Bay

M: 79461080

E: roderick@remax.com.mt

T: 21579747

**RE/MAX Park Estates - St Paul's Bay**

Park Estates Ltd, Mosta Road, St Paul's Bay, Malta