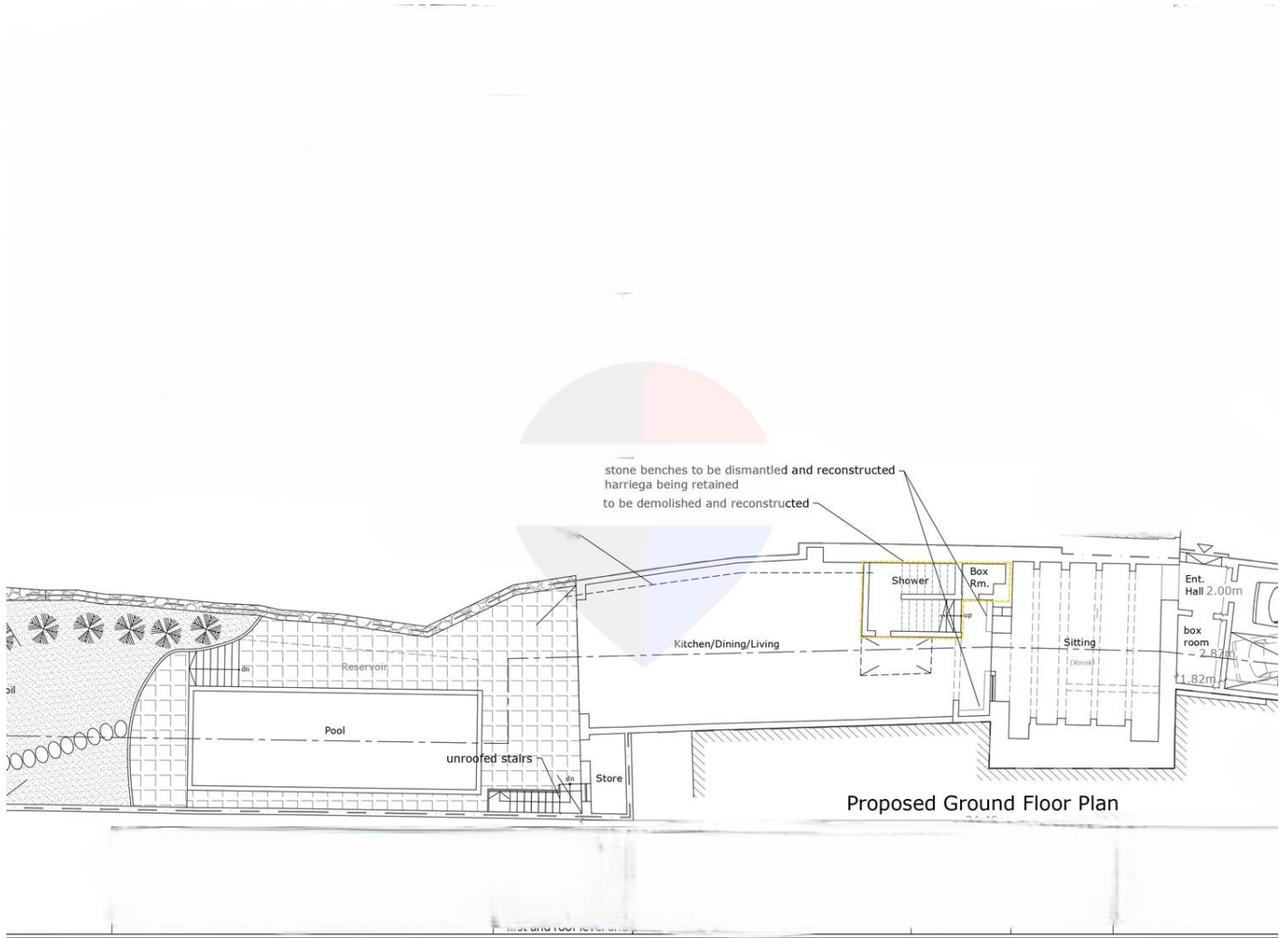


Townhouse in Gozo - Nadur



Gozo - Nadur, Gozo



€750,000

Reference No: 240031036-1142

 Total Rooms: **4**

 Floor Area (m²) : **367**

 Bathrooms: **0**

 Bedrooms: **3**

Townhouse - For Sale - Gozo - Nadur

A rare opportunity to acquire an unconverted terraced house in Nadur, one of Gozo's most sought-after villages, set on a high plateau and known for its scenic surroundings and strong property demand. This property is offered with approved permits for a thoughtfully designed home, allowing you to move forward with development immediately. The proposed layout includes a large basement garage and a spacious ground floor featuring an entrance hall leading to an open-plan kitchen, living, and dining area. This space flows seamlessly onto a private outdoor area with a pool, generous deck, and an exceptionally large garden, a feature that is increasingly difficult to find. The first floor is designed to accommodate three bedrooms, making it ideal for comfortable family living or as a high-quality rental investment. Located within a UCA (Urban Conservation Area), the property combines traditional character with modern potential, offering both lifestyle appeal and long-term value. Nadur itself is one of the largest and most desirable localities in Gozo, enjoying elevated views, nearby beaches, and a strong sense of community. Opportunities like this are limited, particularly those offering such extensive outdoor space and approved permits in place. This is a property with real potential to create a standout home tailored exactly to your needs.

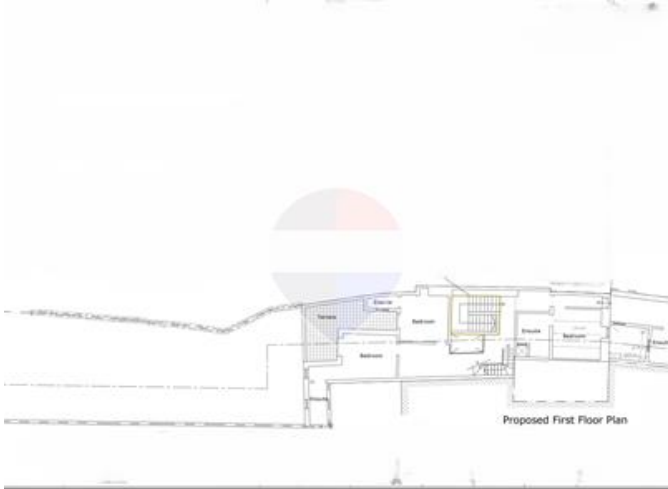
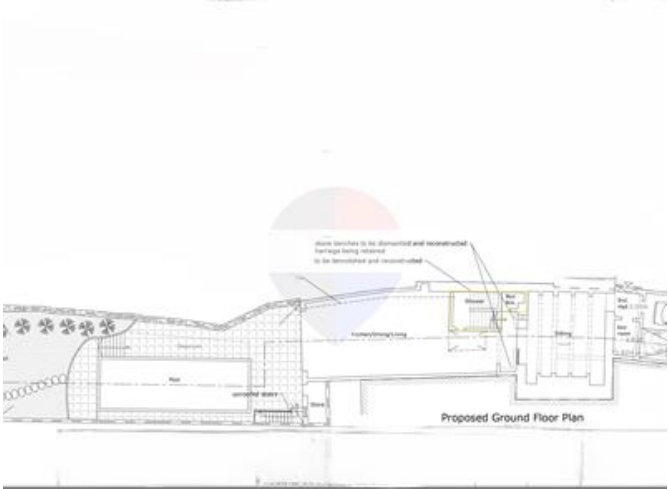
Features

- ✓ Air Space

Rooms

- ✓ Kitchen/Living/Dining : 1 x 1 m (1 m2)
- ✓ Double Bedroom : 1 x 1 m (1 m2)
- ✓ Double Bedroom : 1 x 1 m (1 m2)
- ✓ Double Bedroom : 1 x 1 m (1 m2)
- ✓ Garage : 1 x 1 m (1 m2)

Gallery





Cristiana Azzopardi

RE/MAX Property Centre - Victoria

M: 77202766

E: cristiana@remax.com.mt

T: 21566284

RE/MAX Property Centre - Victoria

11, Independence Square, Gozo - Victoria, Malta