

# Penthouse in Sliema



## Sliema, Sliema and St Julians Surroundings



**€2,500**

Reference No: 240011172-6392

 Total Rooms: 4

 Floor Area (m<sup>2</sup>) : 0

 Bathrooms: 2

 Bedrooms: 1

# Penthouse - For Rent - Sliema

SLIEMA - Seafront Penthouse enjoying spectacular sea view all the way up to Manoel Island and Valletta. Full of natural light, with a very large front terrace and back balcony, layout comprises an open plan fully equipped kitchen / living/ dining leading to the front terrace, a double bedroom with en-suite with sea views which also leads to the terrace, and a spare toilet. Also included is one car space. Truly a one of a kind property, highly recommended !

## Features

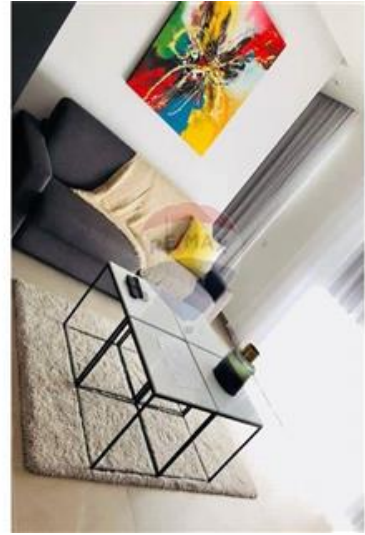
- ✓ Lift
- ✓ Kitchen/Dinette
- ✓ En Suite
- ✓ Double Glazed
- ✓ Balcony
- ✓ Automatic door
- ✓ Ceramic Floor
- ✓ A/C
- ✓ Terrace

## Rooms

- ✓ Kitchen/Living/Dining : 0 x 0 m (0 m2)
- ✓ Double Bedroom : 0 x 0 m (0 m2)
- ✓ Bathroom : 0 x 0 m (0 m2)
- ✓ Guest Toilet : 0 x 0 m (0 m2)

# Gallery







**Trevor Gauci Maistre**

RE/MAX Premium - St Julian's

M: 99241530

E: [trevor@remax.com.mt](mailto:trevor@remax.com.mt)

T: 21384508

**RE/MAX Premium - St Julian's**

72/73, Gorg Borg Olivier Street, St Julian's, Malta