

Penthouse in Sliema



Sliema, Sliema and St Julians Surroundings



€1,650

Reference No: 240011172-3689

 Total Rooms: **6**

 Floor Area (m²) : **0**

 Bathrooms: **2**

 Bedrooms: **3**

Penthouse - For Rent - Sliema

SLIEMA - Penthouse situated in the centre of this sought after town, close to shops and daily amenities. The layout comprises an open plan kitchen/dining/living that leads to a terrace, two double bedrooms, main with en suite, a single bedroom and a bathroom. Equipped and ready to move into.

Features

- ✓ Lift
- ✓ Kitchen/Dinette
- ✓ A/C
- ✓ Double Glazed
- ✓ Automatic door
- ✓ Ceramic Floor
- ✓ Skirting
- ✓ Balcony

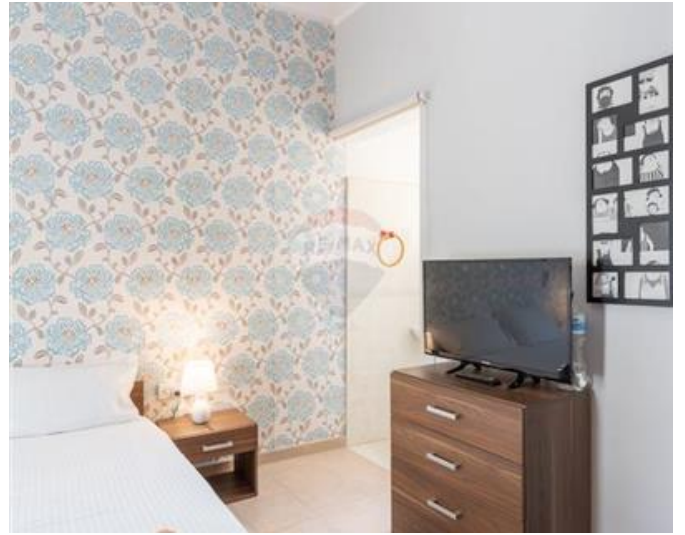
Rooms

- ✓ Kitchen/Living/Dining : 0 x 0 m (0 m2)
- ✓ Double Bedroom : 0 x 0 m (0 m2)
- ✓ Double Bedroom : 0 x 0 m (0 m2)
- ✓ Single Bedroom : 0 x 0 m (0 m2)
- ✓ Bathroom : 0 x 0 m (0 m2)
- ✓ Shower Ensuite : 0 x 0 m (0 m2)

Gallery







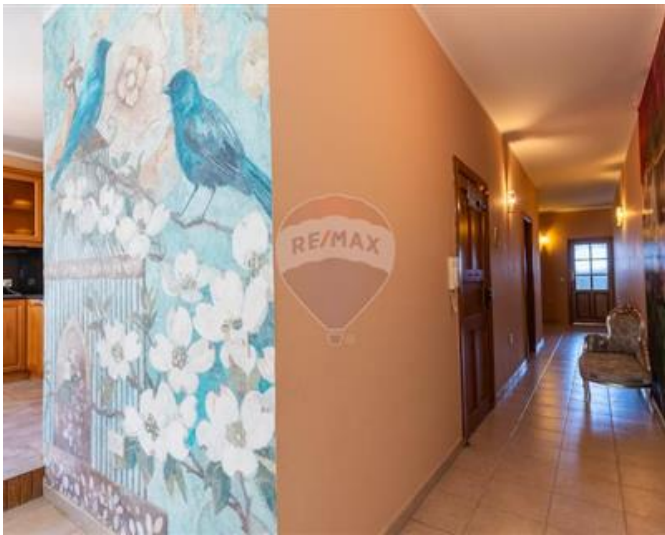
















Trevor Gauci Maistre

RE/MAX Premium - St Julian's

M: 99241530

E: trevor@remax.com.mt

T: 21384508

RE/MAX Premium - St Julian's

72/73, Gorg Borg Olivier Street, St Julian's, Malta