

# Penthouse in Sliema



**Sliema, Sliema and St Julians Surroundings**



**€4,500**

Reference No: 240011172-2014

 Total Rooms: **5**

 Floor Area (m<sup>2</sup>): **0**

 Bathrooms: **2**

 Bedrooms: **2**

# Penthouse - For Rent - Sliema

SLIEMA - A highly finished seafront penthouse, enjoying stunning sea views. SLIEMA is a busy, bustling cosmopolitan town on the eastern coast of Malta, yet still offers peace and tranquility in its quieter streets and gardens with lovely evening walks along the pink promenade of The Strand all the way to Balluta Bay and onwards to beautiful Spinola Bay, St Julians. Located close to The Strand you have Sliema Ferries with access to boat trips around the island and 10 minute foot ferry over to the beautiful and historic Valletta. Within easy access is the shopping district of Sliema and Tigne Point Mall with vast range of shops including major brands, bars, cafes, restaurants and supermarkets. Ease of access from Regional Road giving good vehicular access across the island and excellent bus links with the capital, Valletta. Property comprises of an open plan kitchen/living/dining, which leads onto a large terrace with a pool and outdoor furniture, ideal for entertaining; two double bedrooms, a guest bathroom and an en-suite shower. Optional garages are also available. Not to be missed!

## Features

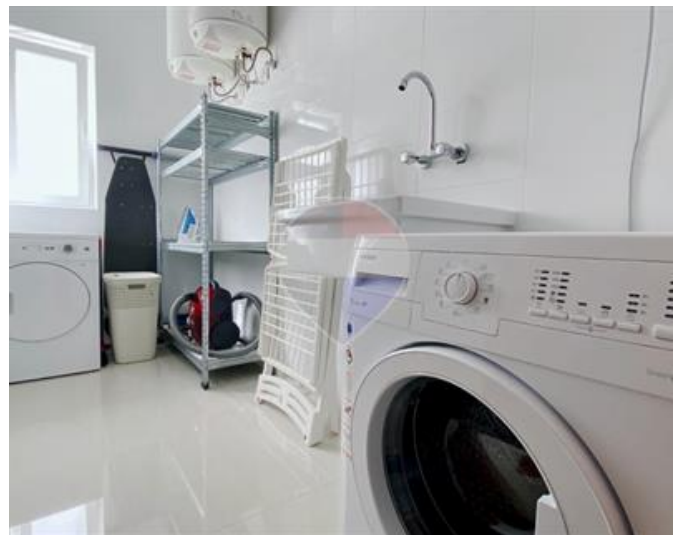
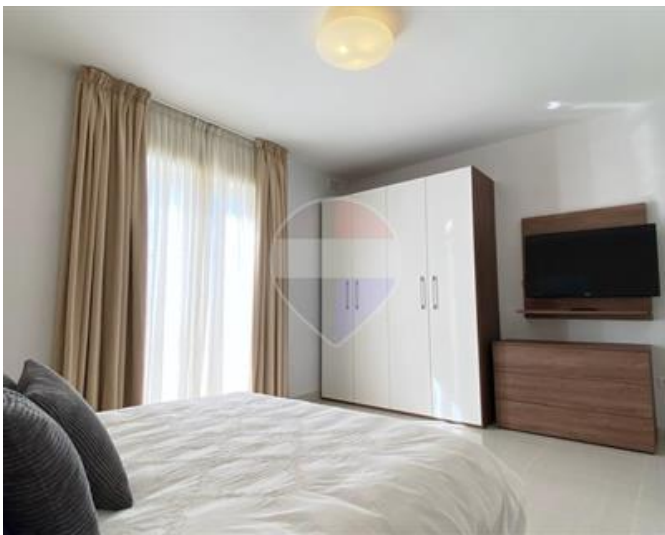
- ✓ Lift
- ✓ Ceramic Floor
- ✓ Entrance Hall
- ✓ Gypsum Plastering
- ✓ A/C
- ✓ Double Glazed
- ✓ Terrace
- ✓ Kitchen/Dinette
- ✓ En Suite
- ✓ Soffit Ceilings
- ✓ 3 Phase Electricity
- ✓ Skirting
- ✓ Pool
- ✓ Balcony

## Rooms

- ✓ Kitchen/Living/Dining : 0 x 0 m (0 m2)
- ✓ Double Bedroom : 0 x 0 m (0 m2)
- ✓ Double Bedroom : 0 x 0 m (0 m2)
- ✓ Bathroom : 0 x 0 m (0 m2)
- ✓ Shower Ensuite : 0 x 0 m (0 m2)

# Gallery









**Trevor Gauci Maistre**

RE/MAX Premium - St Julian's

M: 99241530

E: [trevor@remax.com.mt](mailto:trevor@remax.com.mt)

T: 21384508

**RE/MAX Premium - St Julian's**

72/73, Gorg Borg Olivier Street, St Julian's, Malta